



Huaming Wang

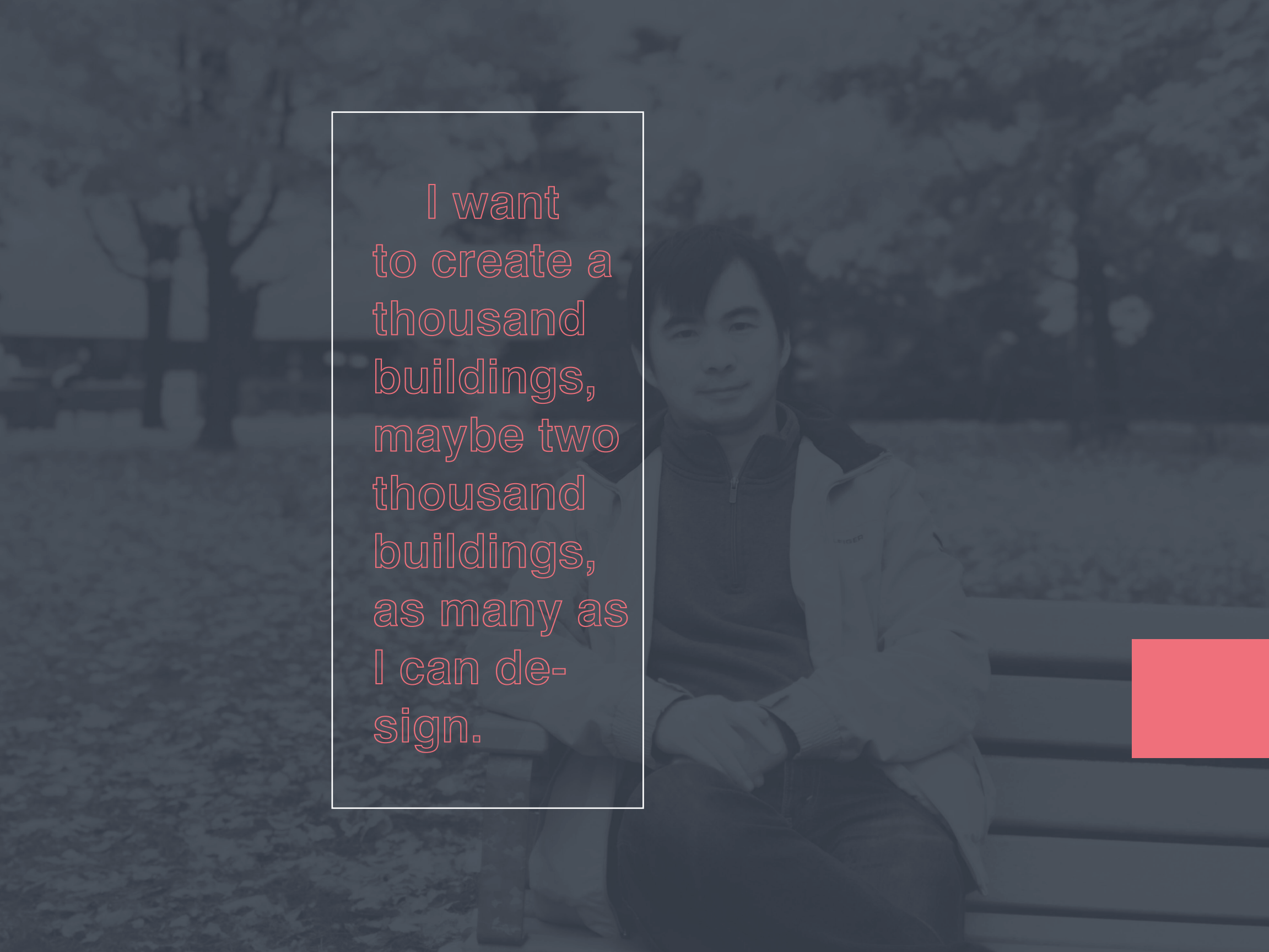
Architecture Design & Art Works
From 2016 to 2019



If I create
from the
heart, near-
ly every-
thing works,
if from the
head, al-
most noth-
ing

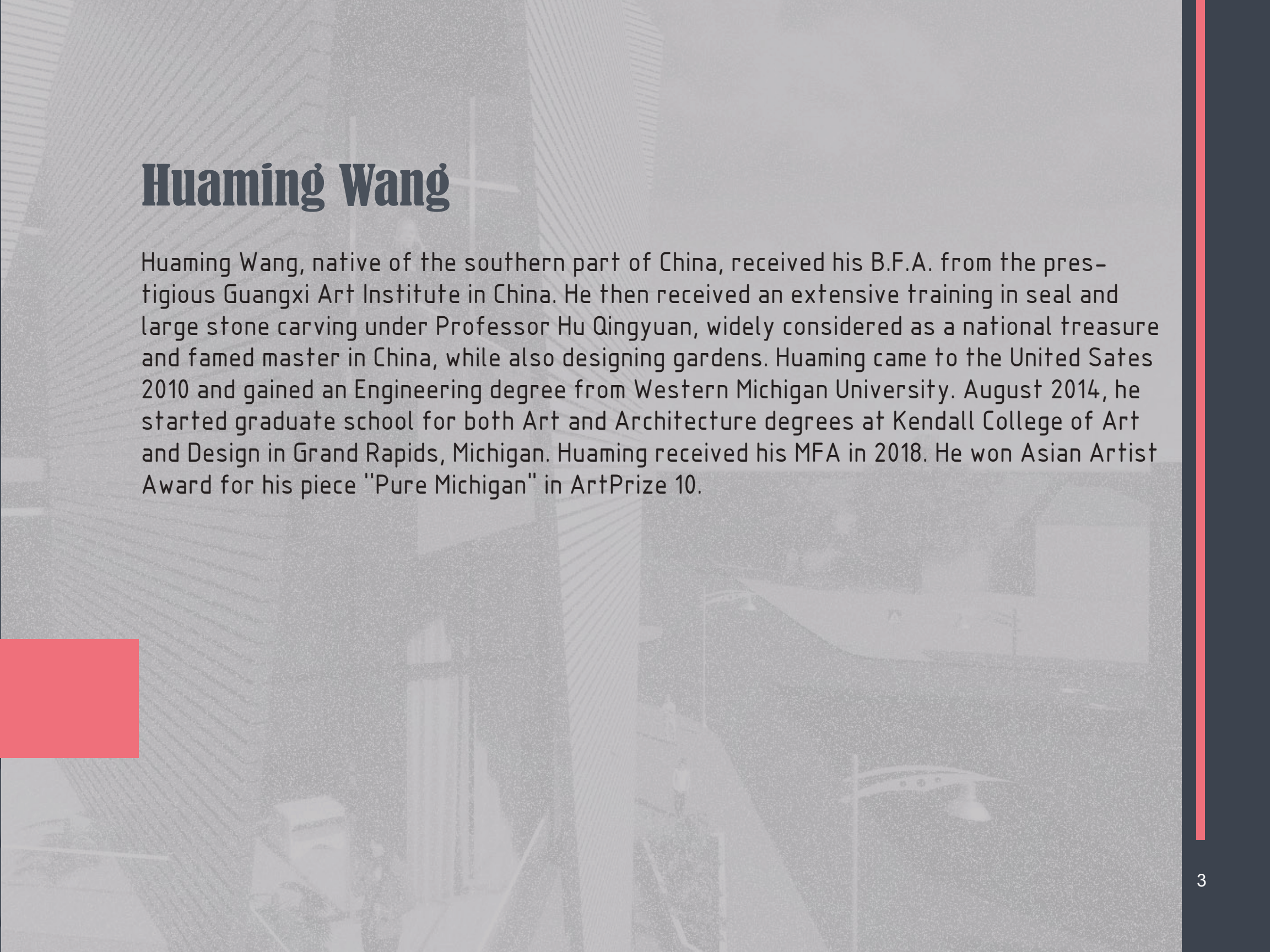
- Marc Chagall



A man with dark hair, wearing a light-colored jacket over a dark shirt, is sitting on a wooden bench. He is looking towards the camera with a slight smile. The background is a blurred outdoor setting with trees and a fence.

I want
to create a
thousand
buildings,
maybe two
thousand
buildings,
as many as
I can de-
sign.

Huaming Wang

A modern building with a glass facade, featuring a prominent vertical architectural element. The building is set against a light sky. In the foreground, there are some architectural details like a railing and a small structure.

Huaming Wang, native of the southern part of China, received his B.F.A. from the prestigious Guangxi Art Institute in China. He then received an extensive training in seal and large stone carving under Professor Hu Qingyuan, widely considered as a national treasure and famed master in China, while also designing gardens. Huaming came to the United States in 2010 and gained an Engineering degree from Western Michigan University. In August 2014, he started graduate school for both Art and Architecture degrees at Kendall College of Art and Design in Grand Rapids, Michigan. Huaming received his MFA in 2018. He won the Asian Artist Award for his piece "Pure Michigan" in ArtPrize 10.

A City-Village For Yao People

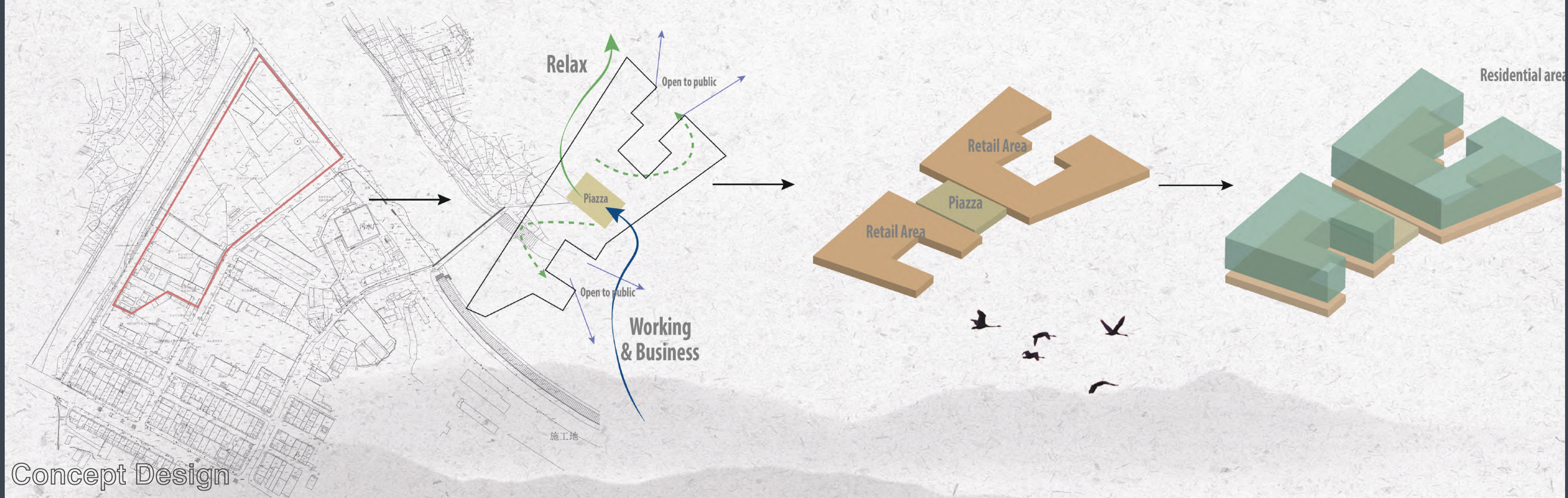
China has 56 minority groups, and the main differences between each are culture and life style. Yao is a Chinese minority group with 2.8 Million members in the world, the significant population distributed in China, Vietnam, Laos, Thailand, and the United States¹. Guangyan is a small county in South of China. It is the birthplace of Yao people². Yao people have lived in the mountains for a thousand years to escape wars and exactions. Today, China is seeing big improvements in its economy, and rapid urbanization, as many millions of people move from the country side to the city. Many Yao people have chosen to pursue a modern life and have moved to city as well. The traditional Yao village doesn't have enough resources to support Yao people's desires for a richer life.

The traditional Yao house, through many experiences, has been adapted to the topography, culture, weather, technology, and life style of south China. When Yao people move to the city, they have to acclimatize a new culture, a new topography, a new life. Thus, the new characteristics and traditional Yao characteristics mix together. However, the Yao neighborhood in Guangyan doesn't show any of the positive features of Yao village life. The buildings in Guangyan have high density, are isolated from each other, promote little or no communication between neighbors, and separate work and living space. However, city has many benefits as well—that residents can have well-paying work (even if many supplements it with their small neighborhood shops), access to convenient transportation including automobiles, more cultural diversity, etc. Consequently, to find a better way to design housing for Yao people in the city is a challenge of great significance.

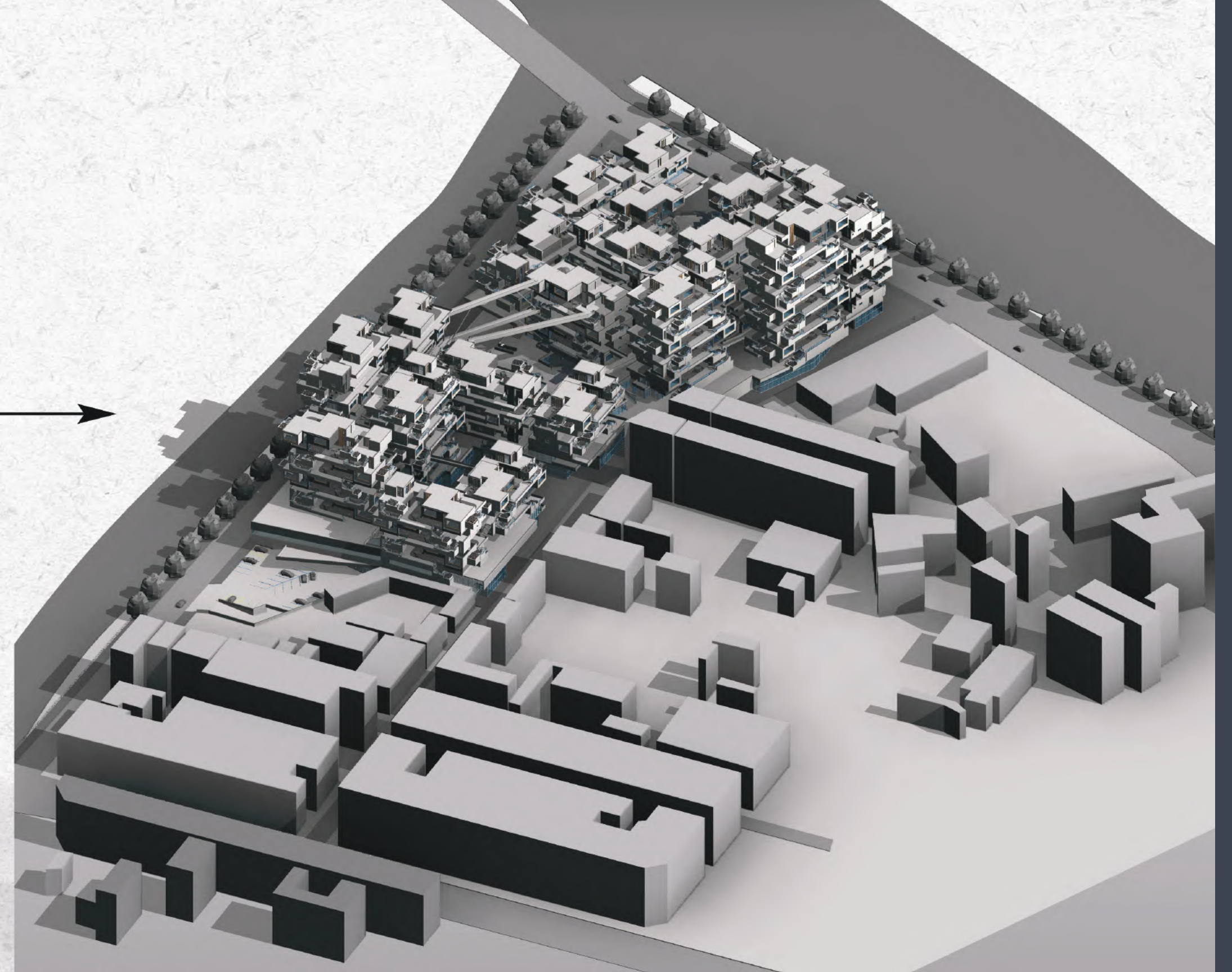
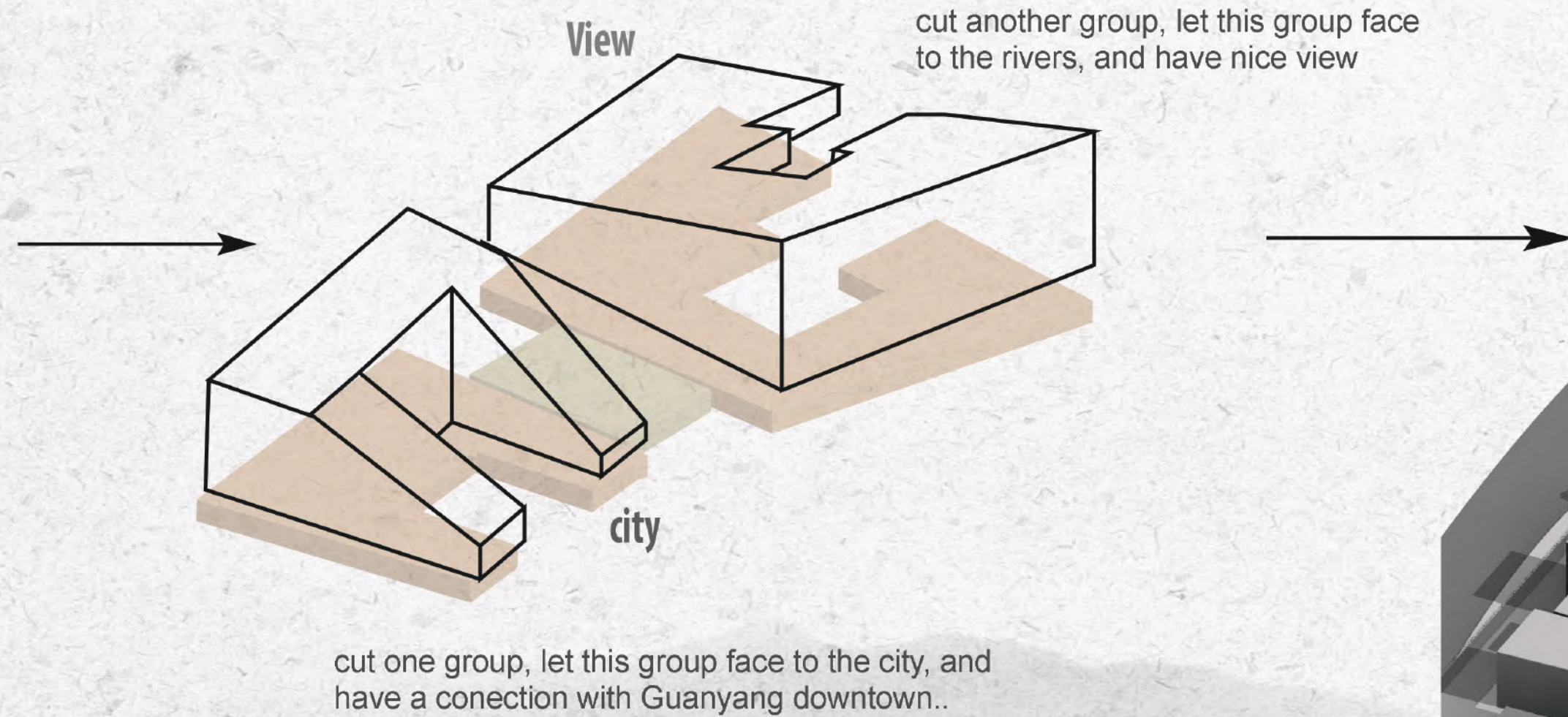
The contemporary Yao neighborhood in the city should express both Yao village characteristics and city features together. In the City-Village model proposed here, a small community space is composed of five units. Three units share a courtyard, and the other two share a courtyard and a living room. Each unit has its own working space at home. This small community connects to other small communities within the same development to create a larger village within the city, all sharing a common piazza and retail space. The Yao City-Village encourages people to live as a community, and gather together as they had in the village. Neighbors can easily invite people to their houses to have traditional oil tea together, to drop in and visit, to sing folk songs, have square dancing, and play Taiji.



Create a Larger Village within the City

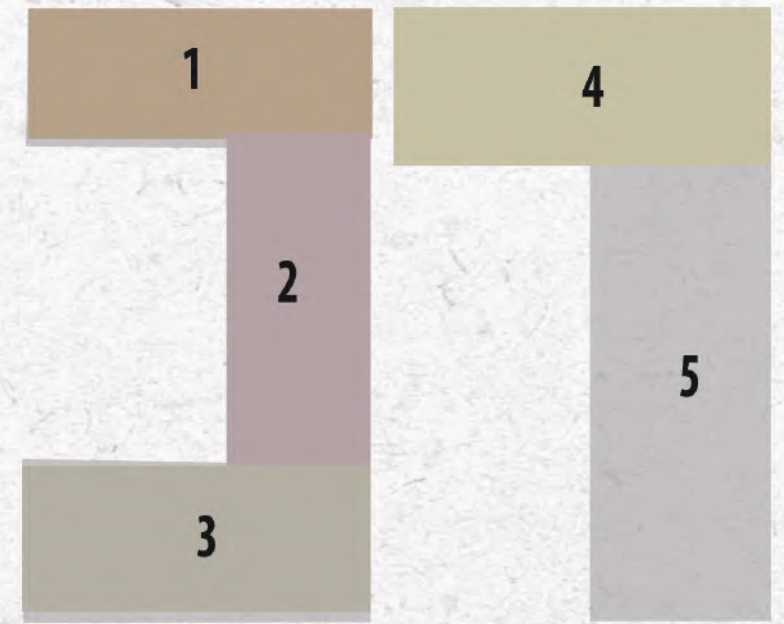
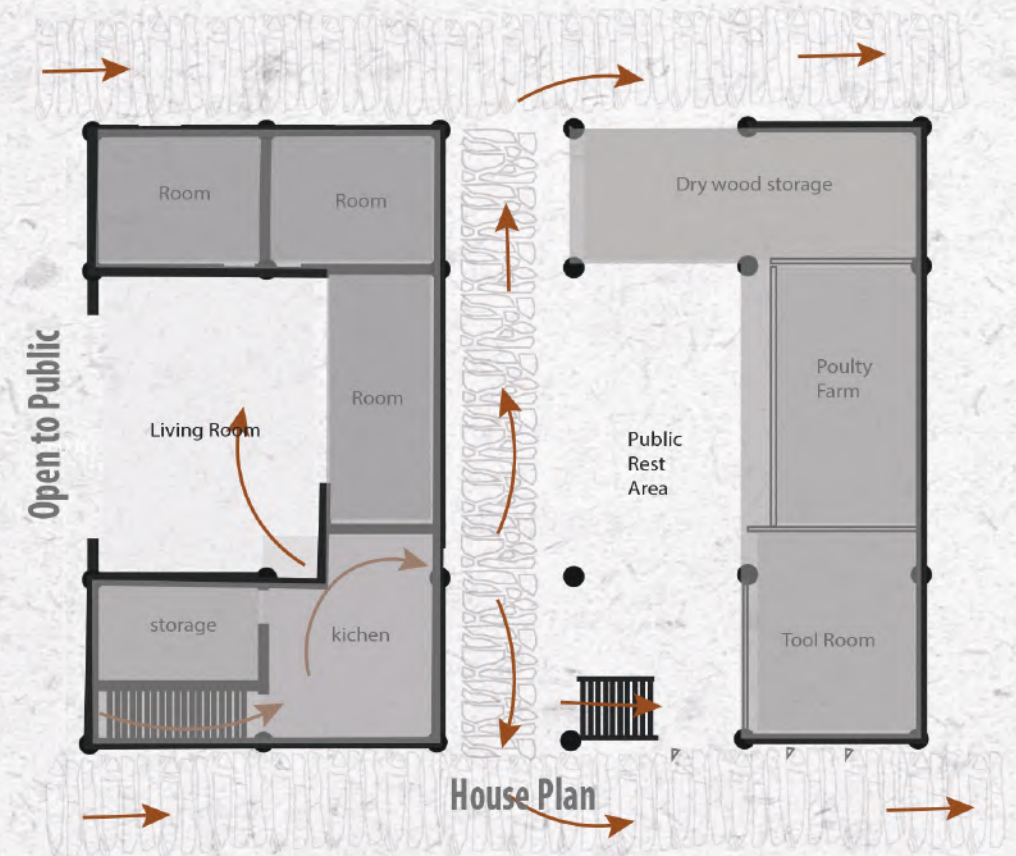


Create a Larger Village within the City

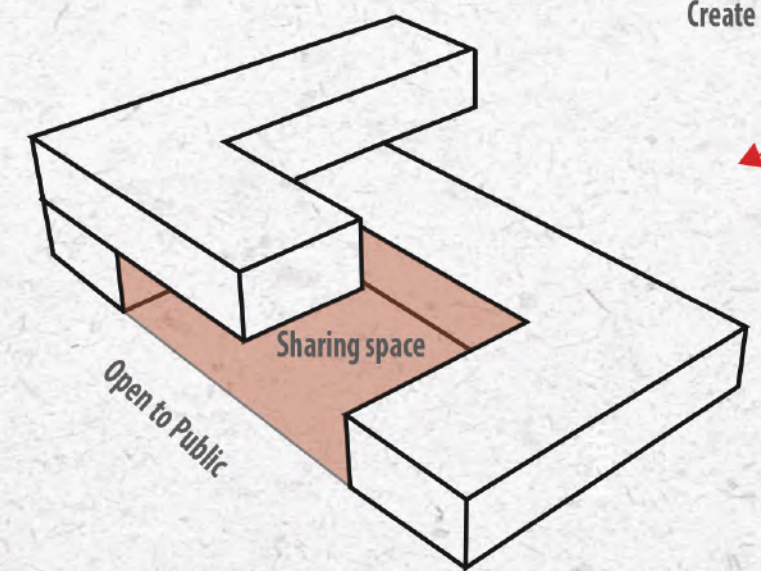


Five-Unit grouping

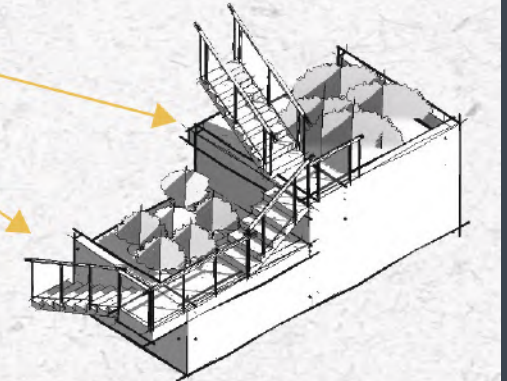
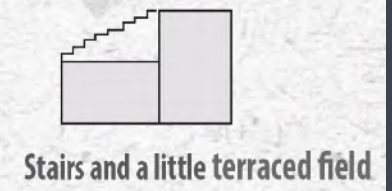
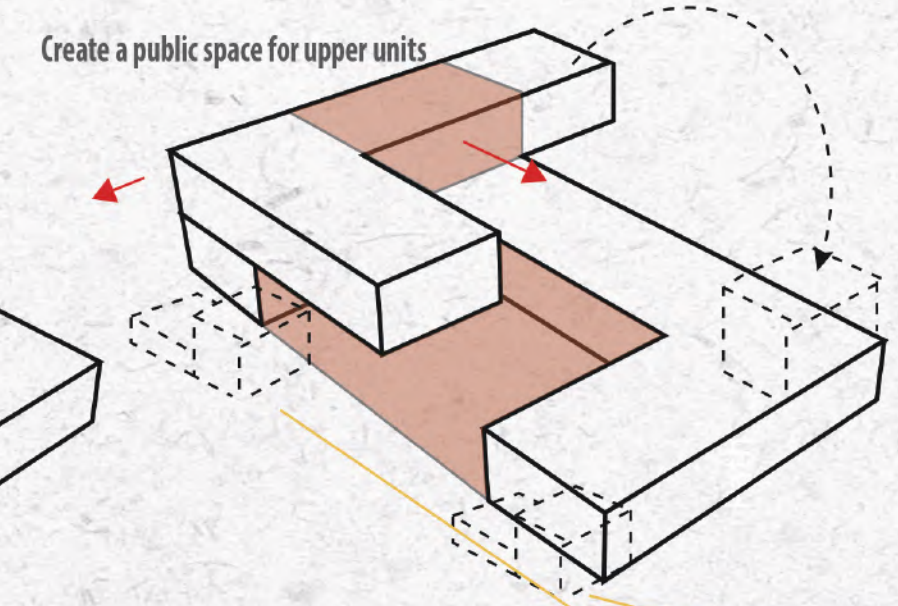
inspired by the form of the traditional village house



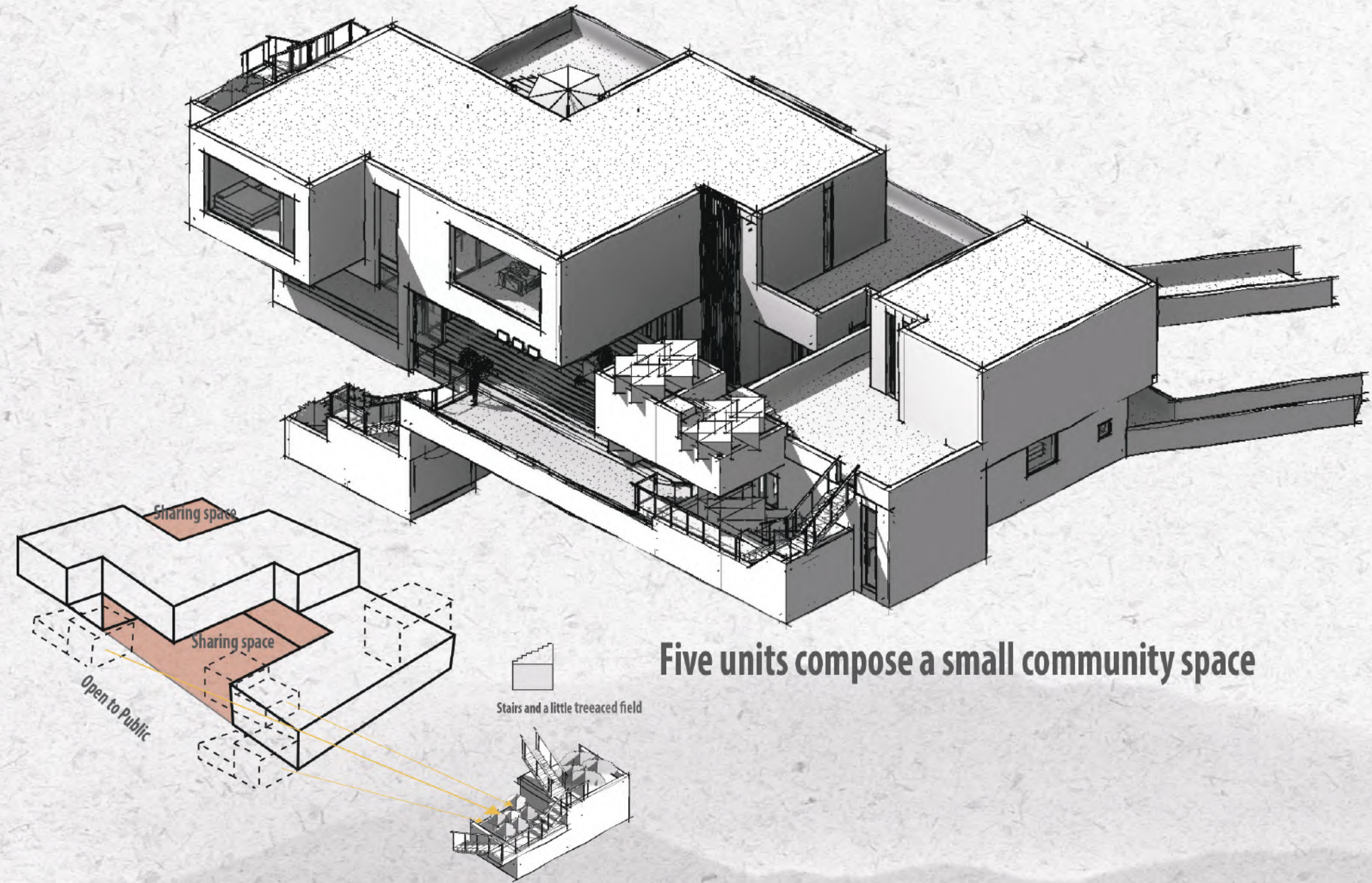
Five units compose a small community space



Create a sharing space



A small community space

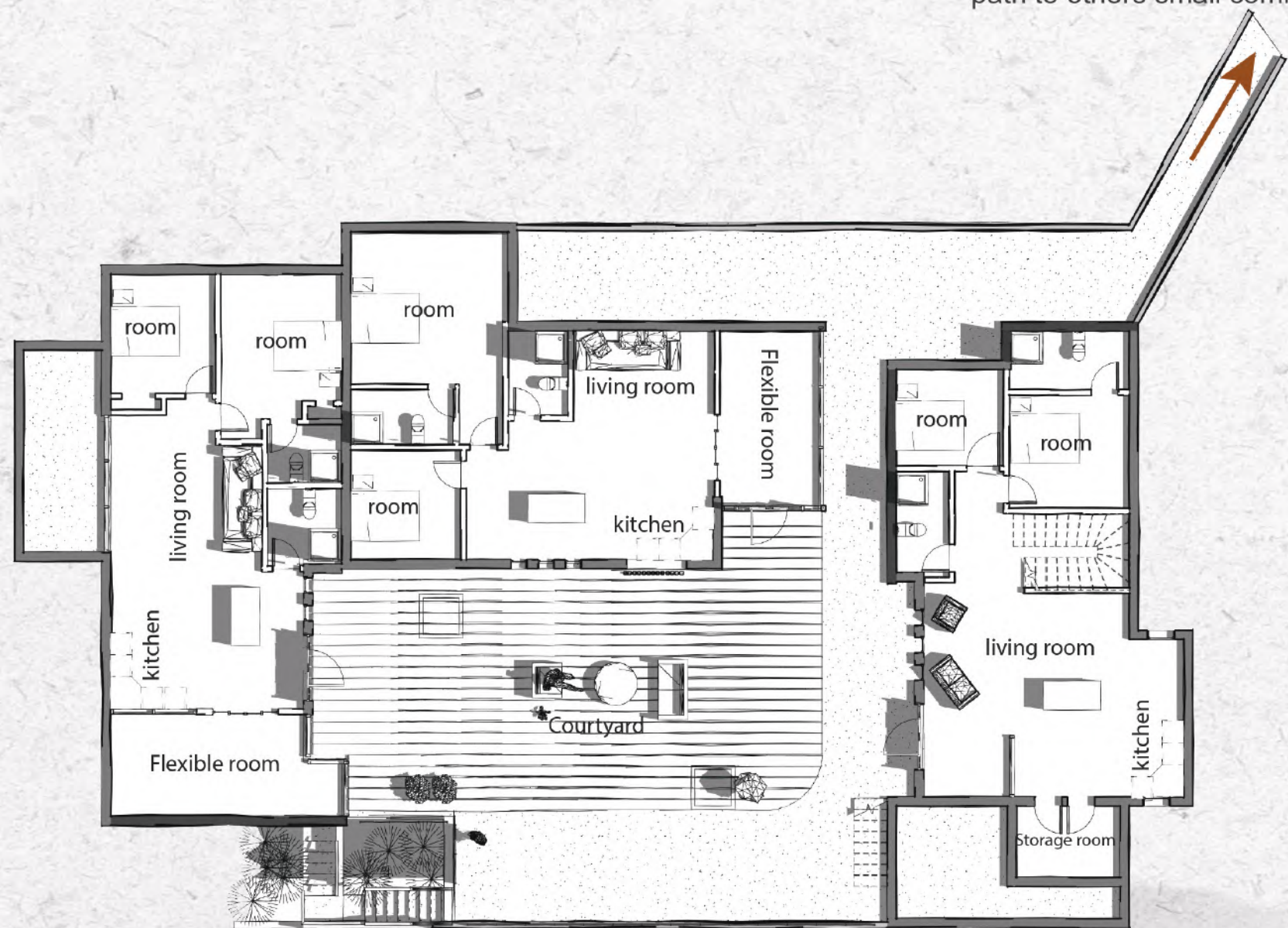


Five units compose a small community space



Section of small community space

path to others small community space



First floor plan (the five units)

path to others small community space



Second floor plan (the five units)

Relations of space, stairs, paths, planters



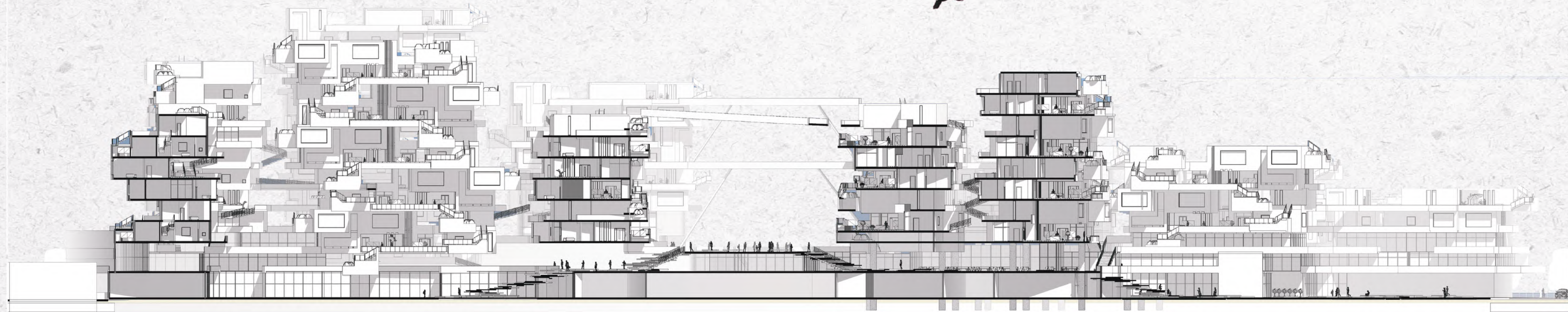
Courtyard

Stairs and path

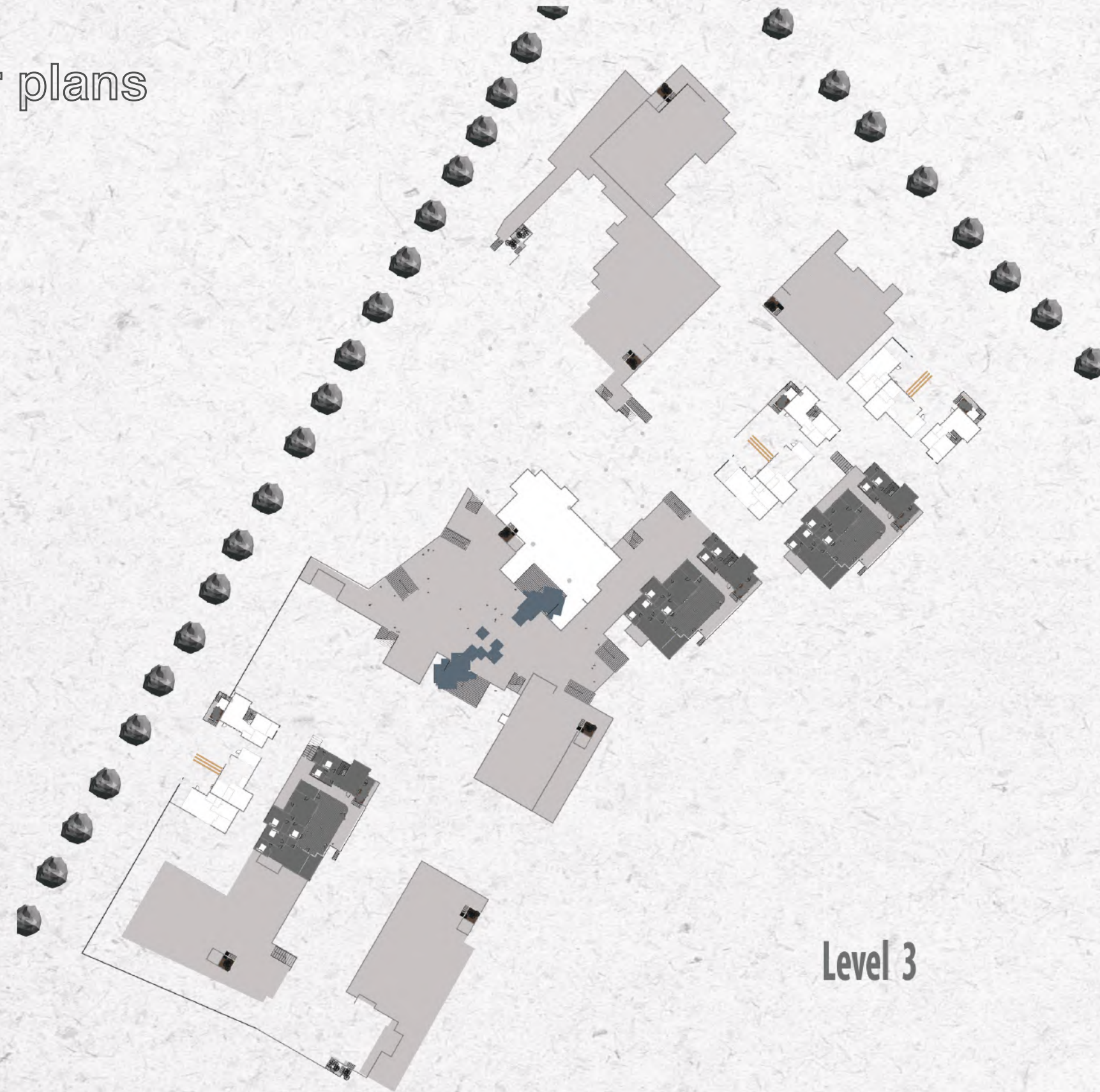
planter

plaza

Retail



Floor plans



Level 3



Path & stairs

Level between 4 and 5



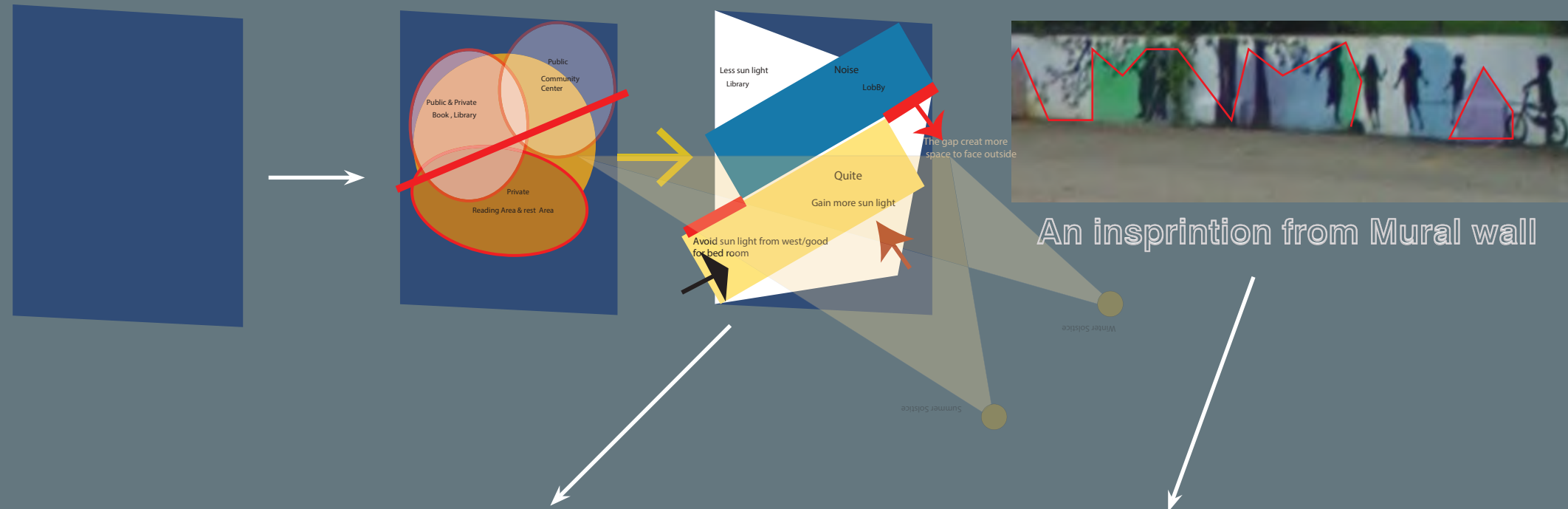
Rendering photos



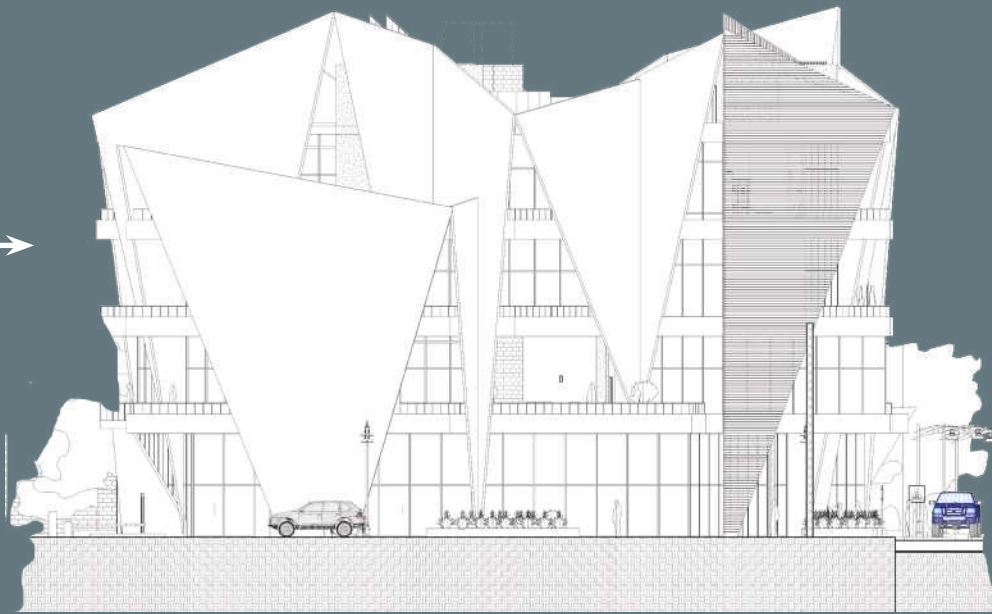
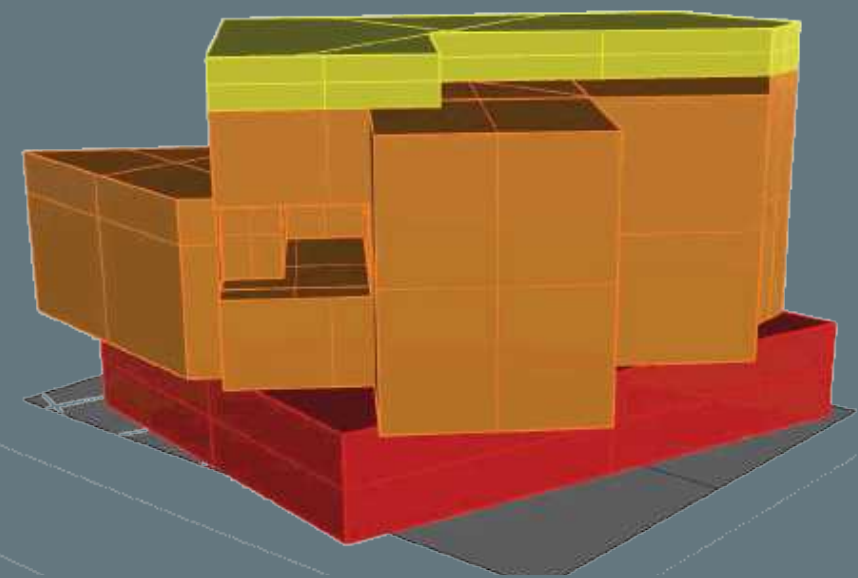
Mix building with library, communication center, and apartments

This site is in the West side of Grand Rapids Downtown, near the GVSU. Most people living in this area are 20 to 40 ages, they are single, student or small family. From the site code, the building max high is 4 levels, and the building requests community center, Library, office, and 20 Dwelling units. the building requests community center, Library and office take 1 level space at least, 20 Dwelling units take three levels space, so each level need 7 units apartment, how to keep these 7 units has enough sunlight and day light, each unit has balcony. The site is in the Michigan, so the building need get more sun night for worm inside room, it is great positive energy sources. The North of the site is Fulton street, it is busy and noise, so the noise control is important. The form of building design, I have an inspiration from the Mural Drawing in the site space, the roof line of the residential area, and how the residents stay with it. Then, I am thinking about how to use the roof line in the building can integrate into the residential houses.

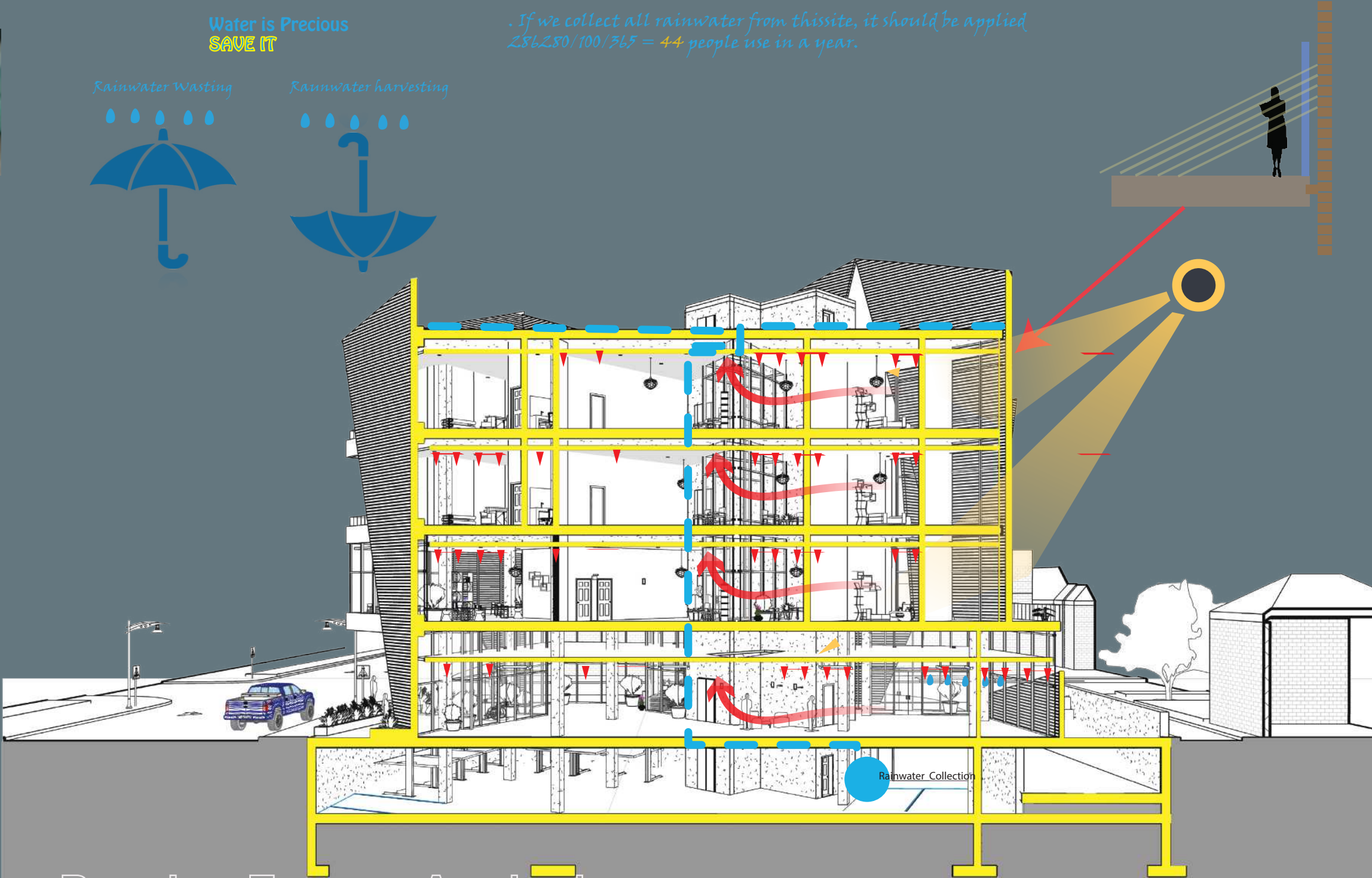




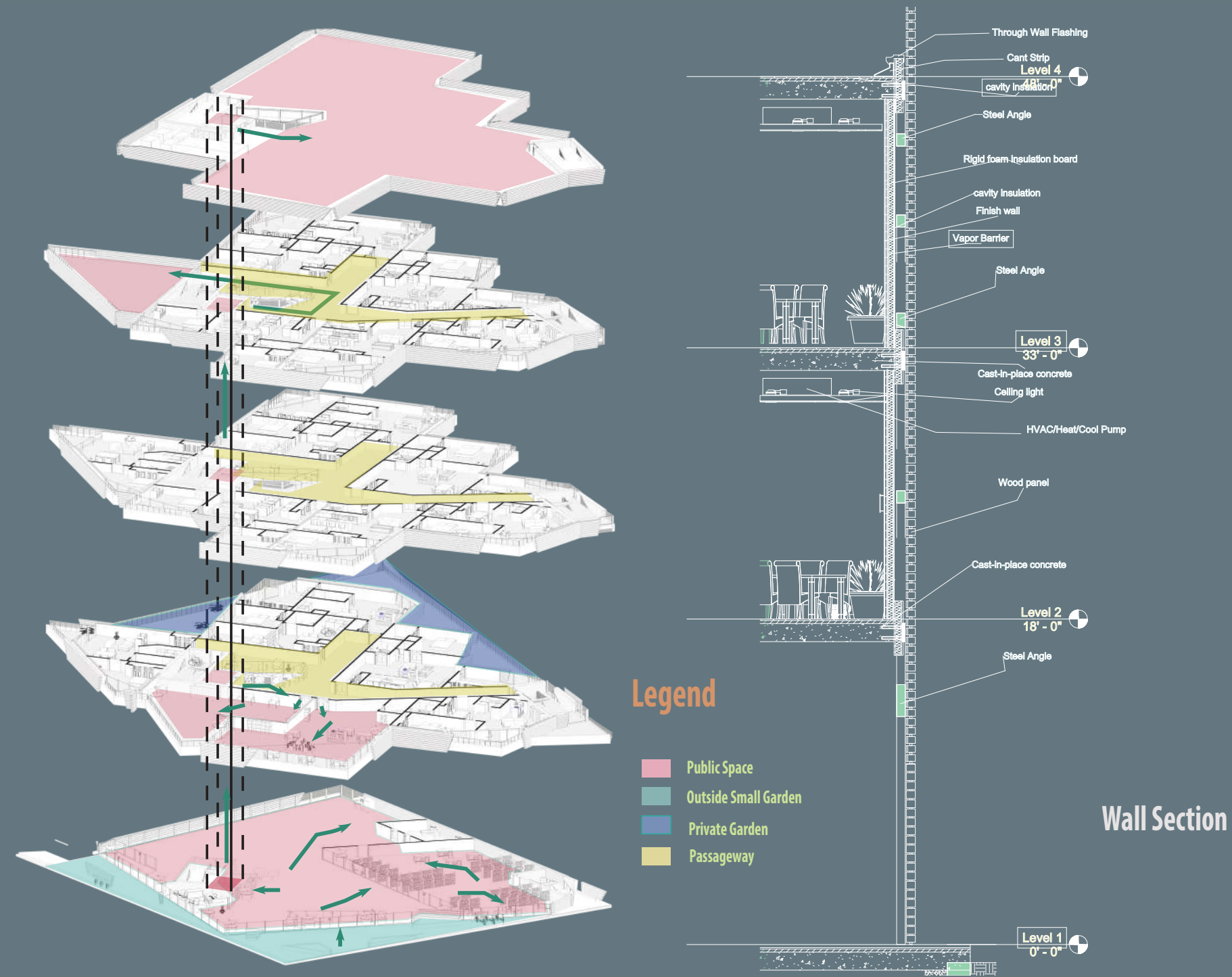
An insprintion from Mural wall



28 Site Analysis



Passive Energy Analysis



30 Plan & Wall section





Rendering photos



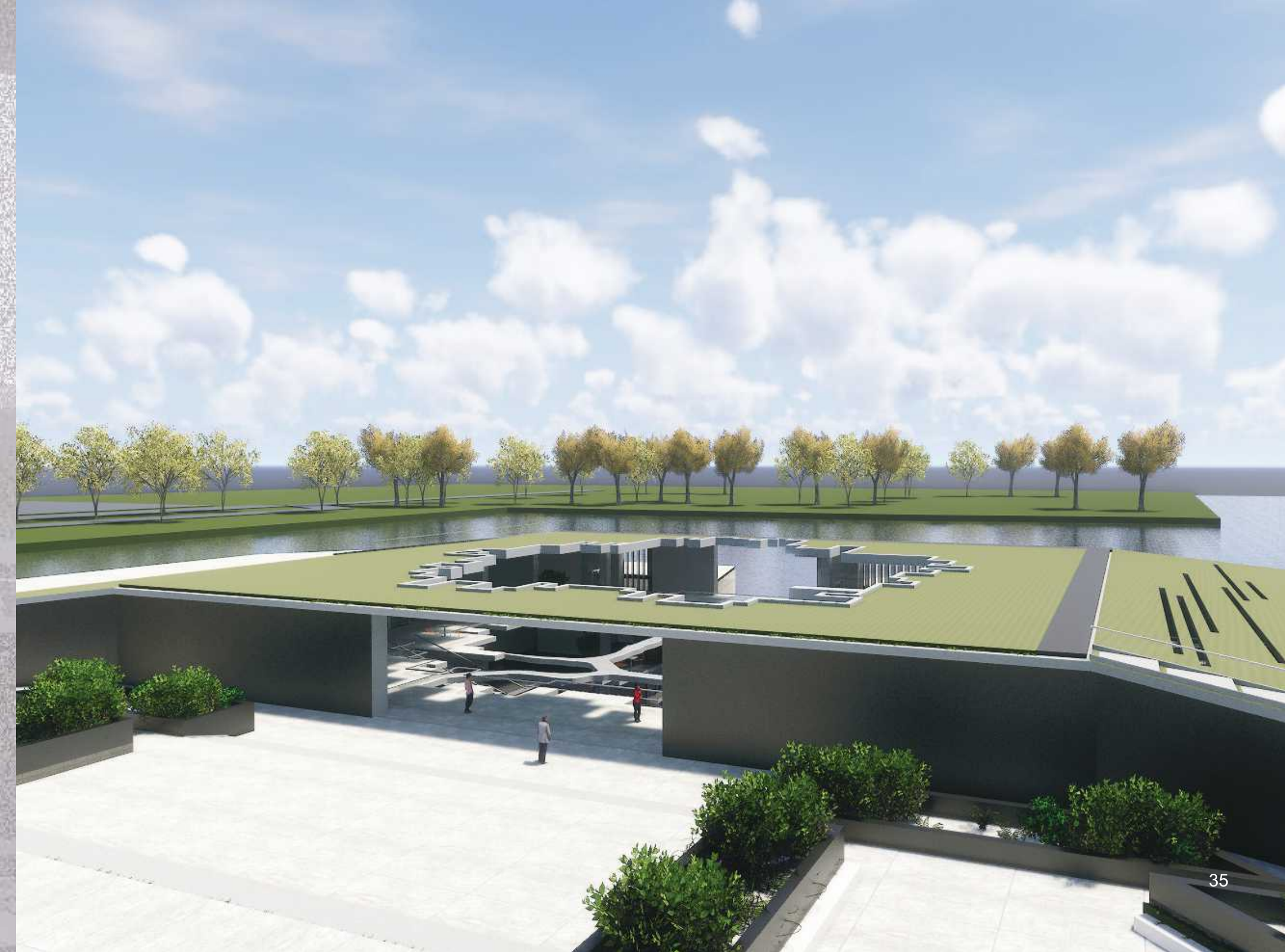
MDuSable Park

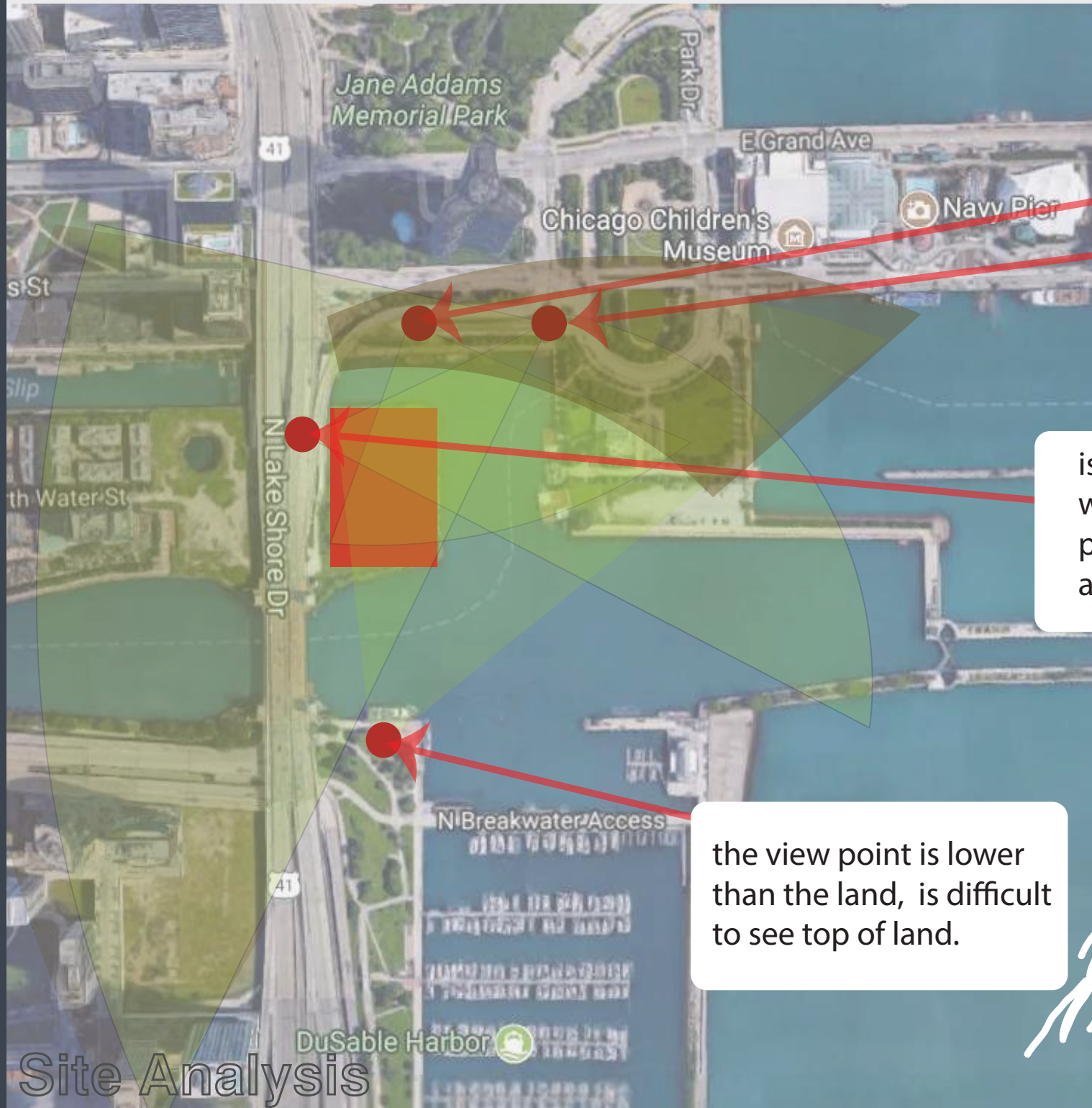
Chicago River Museum

Upon considering a development project for this land, there are two things that are, in my opinion, of the greatest importance: the first one is the stunning view of Chicago's skyline. When I stand outside the city, I am impressed by its unique view. I can feel the history of the city whenever I look at the configuration of the city of Chicago, and I always strive to find ways to be able to represent the varied shapes of Chicago in this project. The other thing that I want to illustrate in this project is the history of Chicago. The city of Chicago does not have a long history: the city was founded in 1830 and grew with the industrialization and modernization that came along with the implementation of numerous technologies.

However, I think that the various modes of transportation in Chicago hold an important and symbolic meaning. I would like to distinguish three categories of transportation to explain the different time range of Chicago. First, the river and boat. Second, the train and railway. Third, the automobile and roads.

At the edge of the city of Chicago, the city created a beautiful side park between Lake Michigan and Chicago. I don't want to change this initial concept, so I would like to keep this land as a park, and try to blend in my own development project with the park.





Good view for the land and the city of Chicago

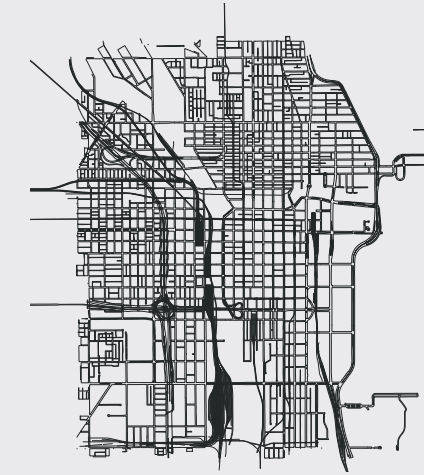
is the best space to look whole land, however, the place is too noise, dirty, and disorderly

the view point is lower than the land, is difficult to see top of land.

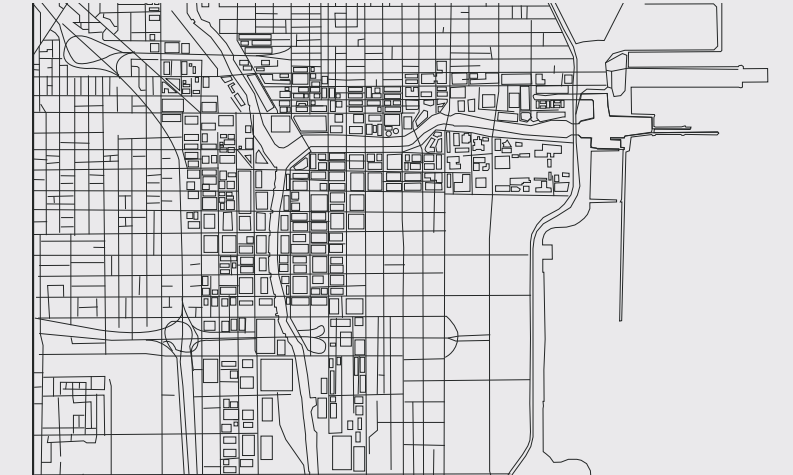
Site Analysis



Chicago map 1833



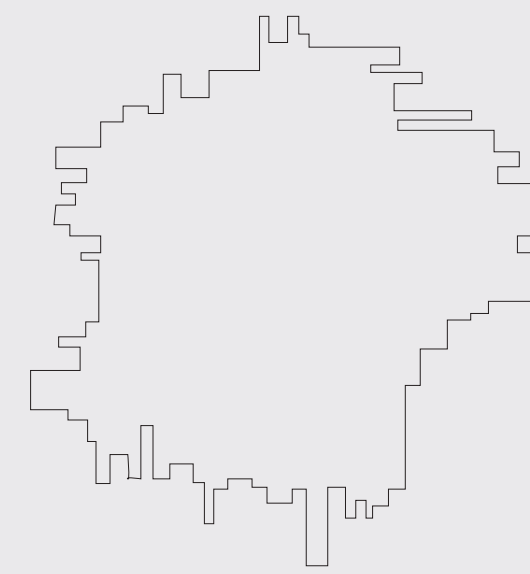
Chicago map 1905



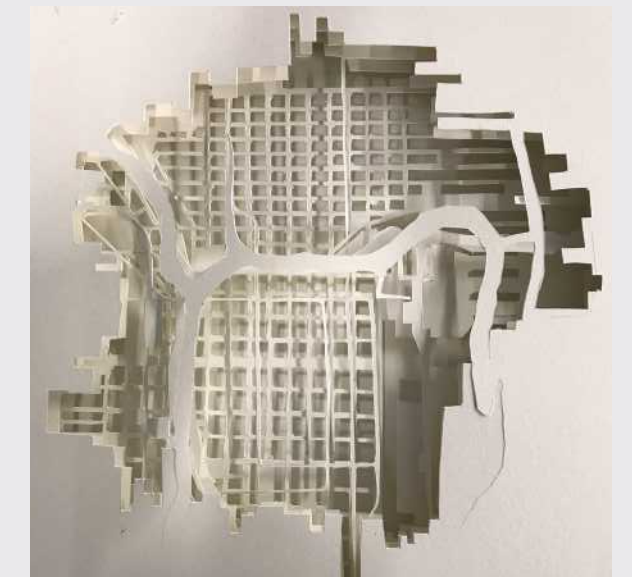
Chicago map 2017



Chicago skyline

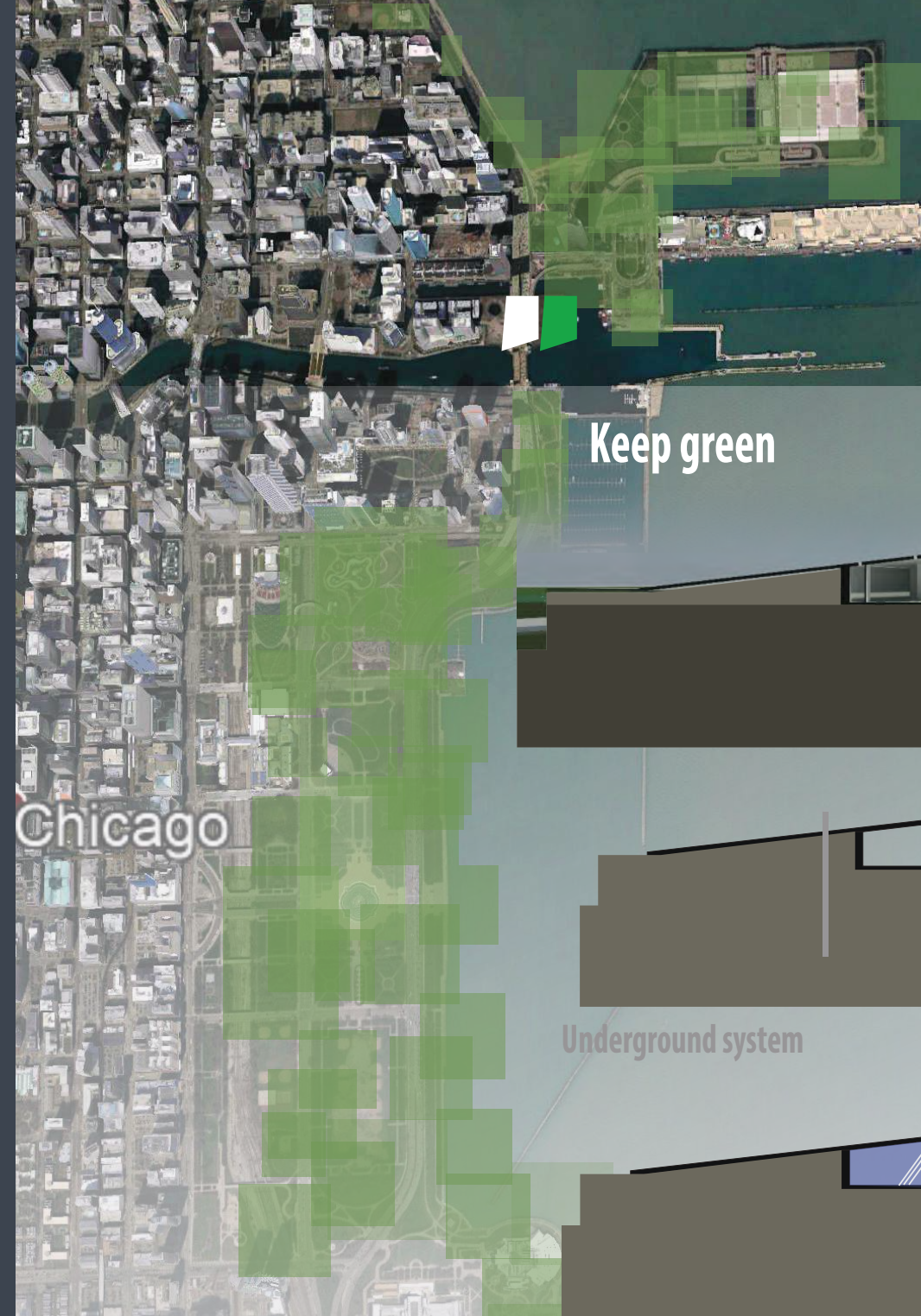


Hole of Chicago skyline



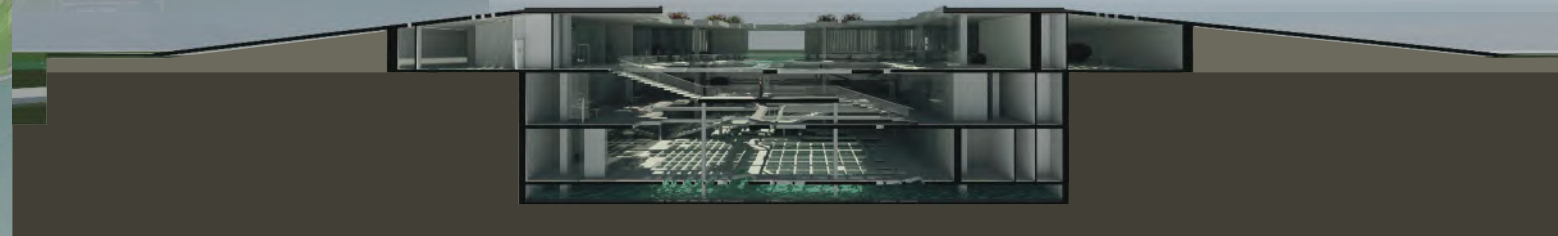
Overlay maps and skyline

Concept Design

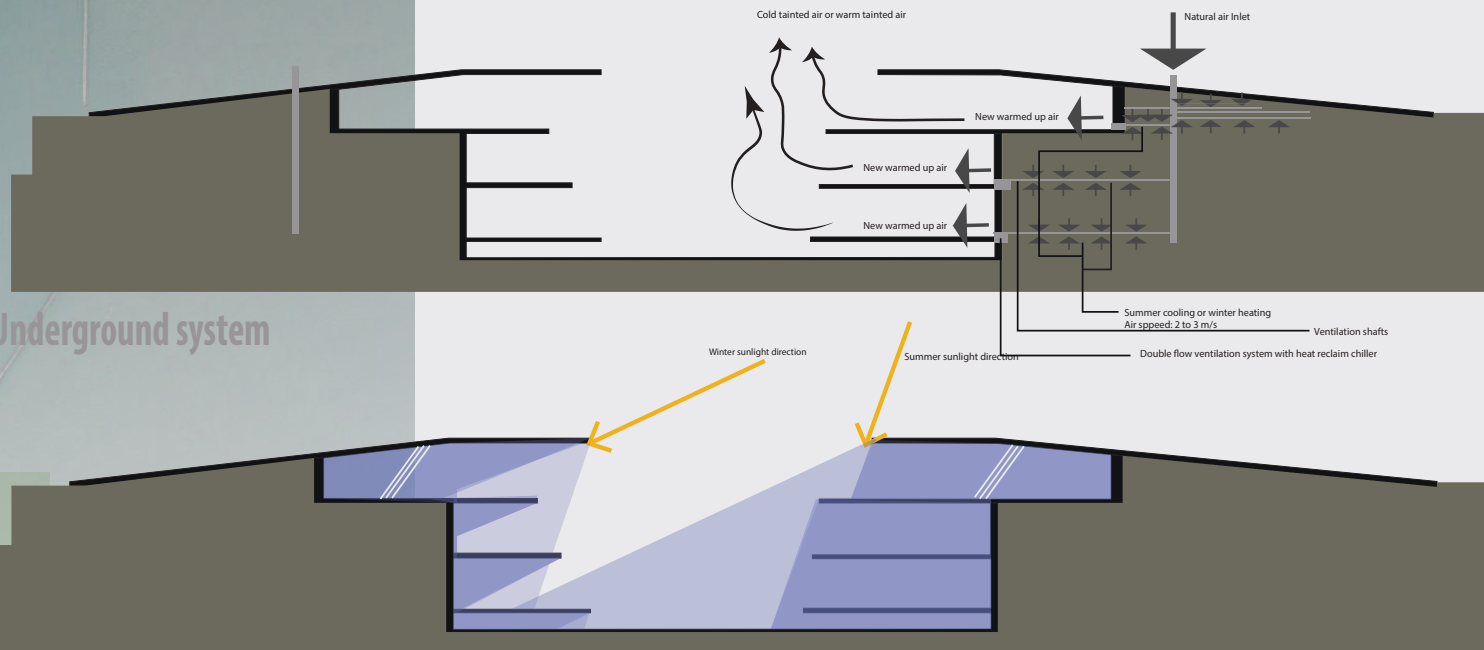


Keep green

Roof grass



Underground system





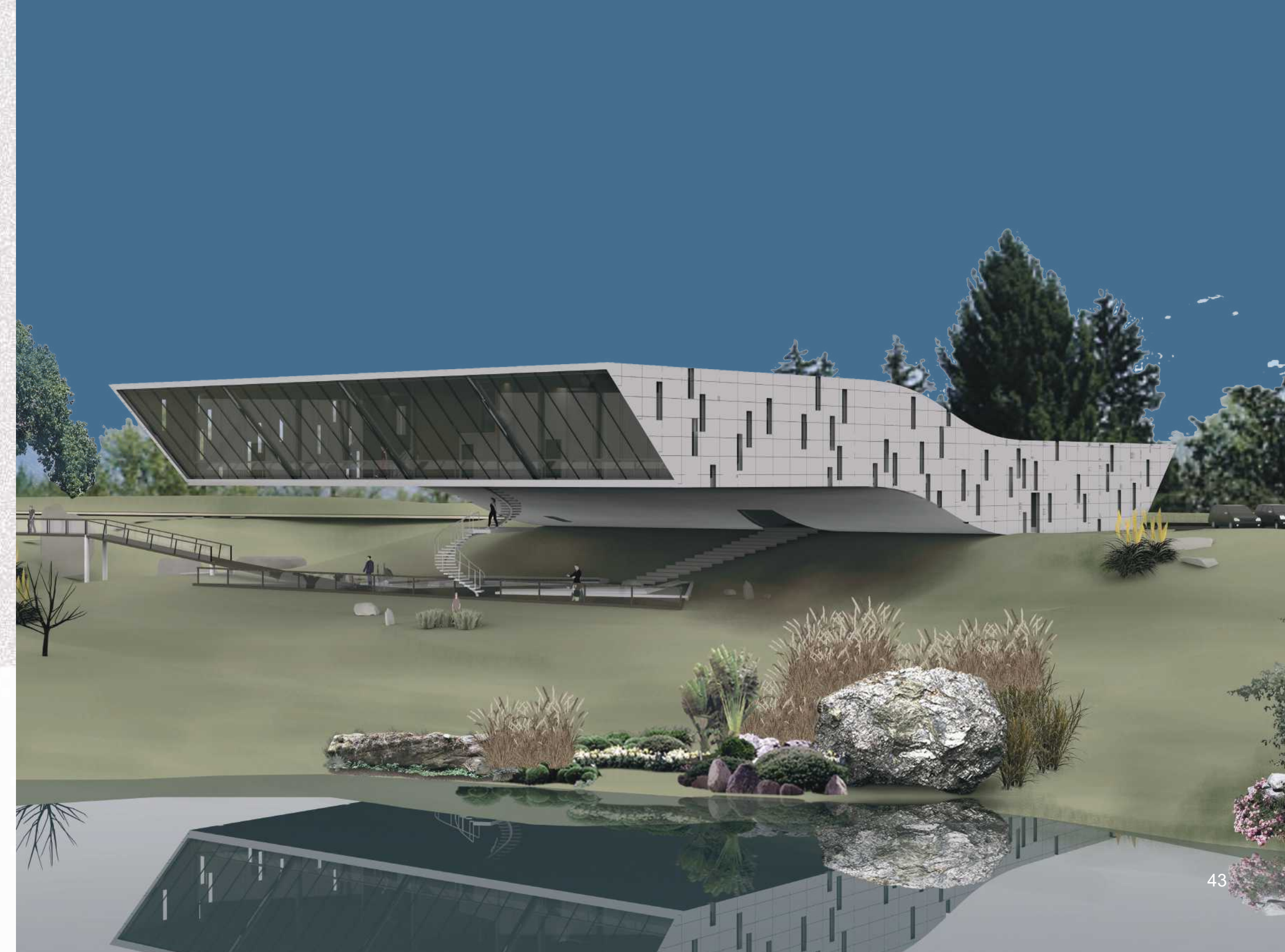
Rendering photos



Urban School For Outdoor Education

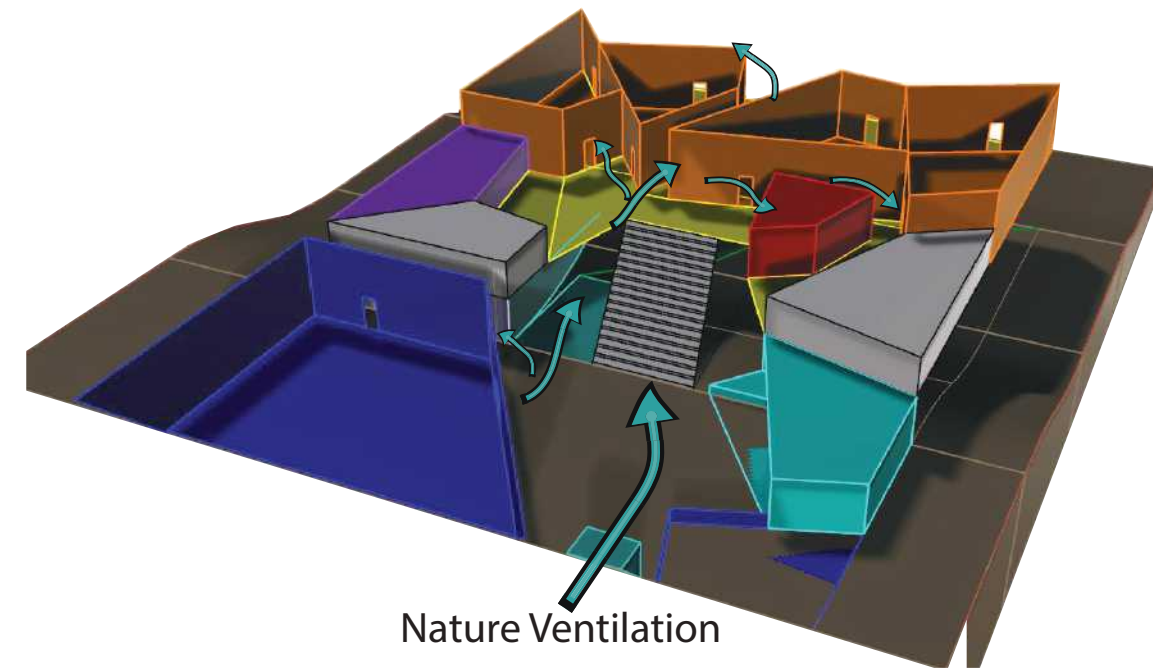
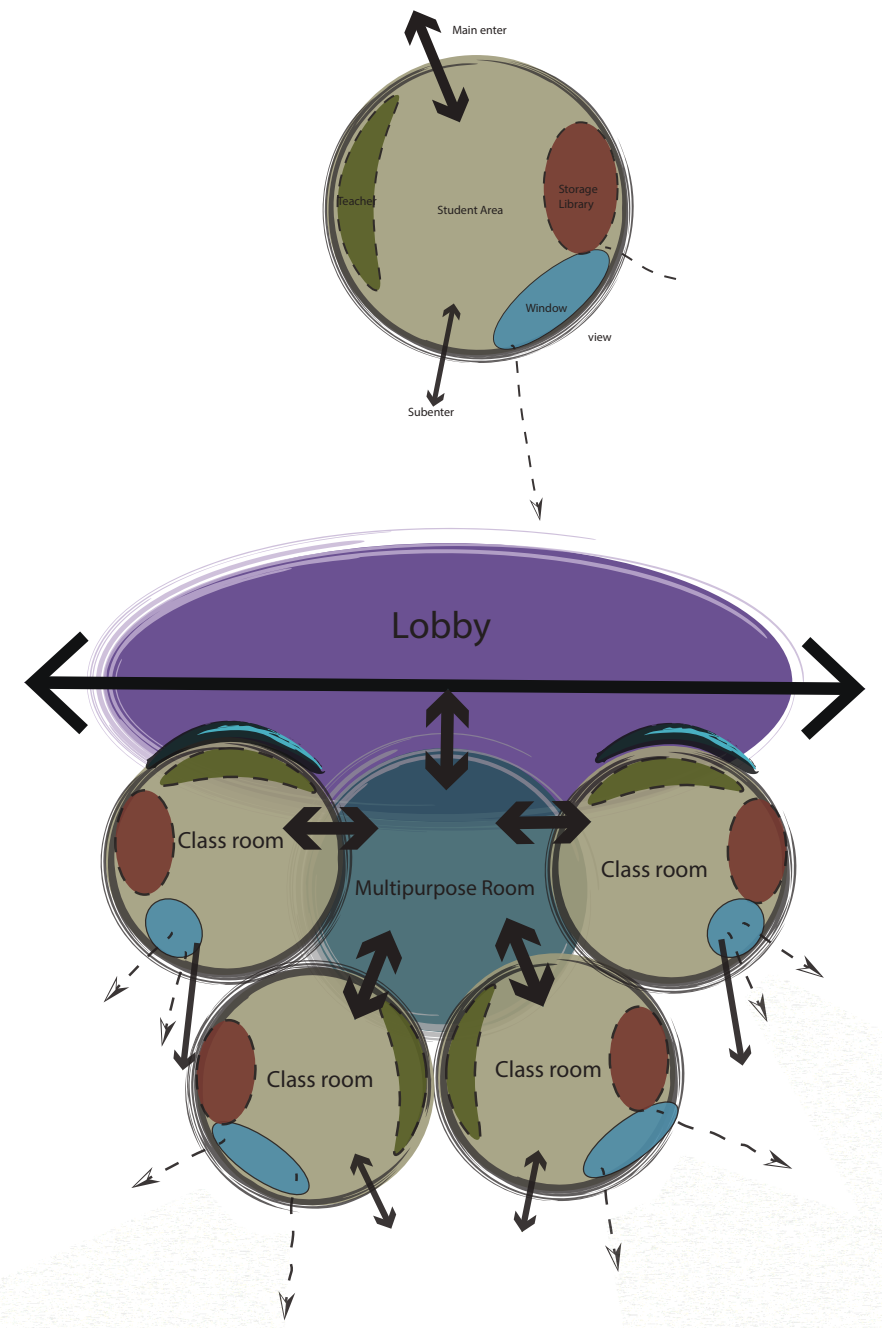
Urban School, For 5th, 6th grades students. Design a school connect to outside and inside, engaging students participating environment. Collaborate with fellow teachers to create a data-driven, learner-centered, friendly and safe environment demonstrating shared responsibility for achievement.

Students in urban and urban high poverty schools were just as likely as their non-urban counterparts to be offered and to participate in certain programs and courses, with the following exceptions: they were more likely than their rural counterparts to have attended preschool, and they were less likely than most other groups to have attended schools with gifted and talented programs.

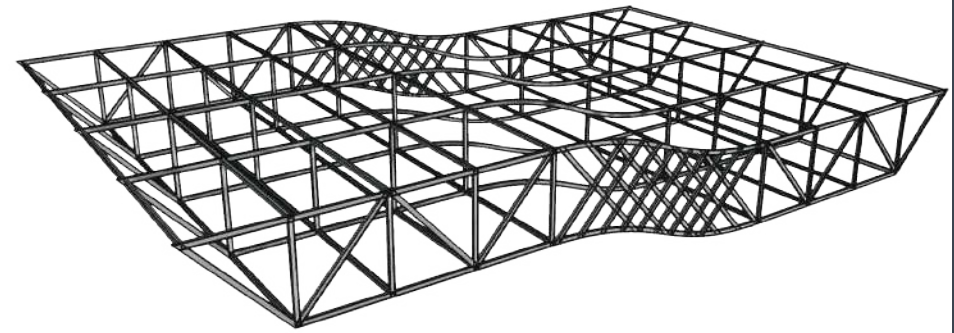




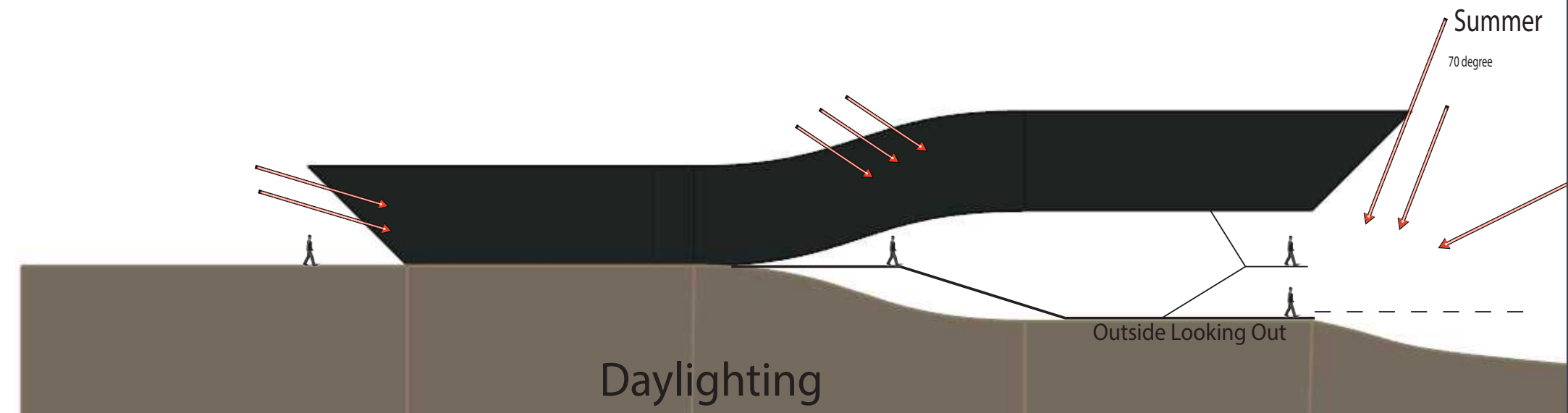
Site Analysis



Nature Ventilation



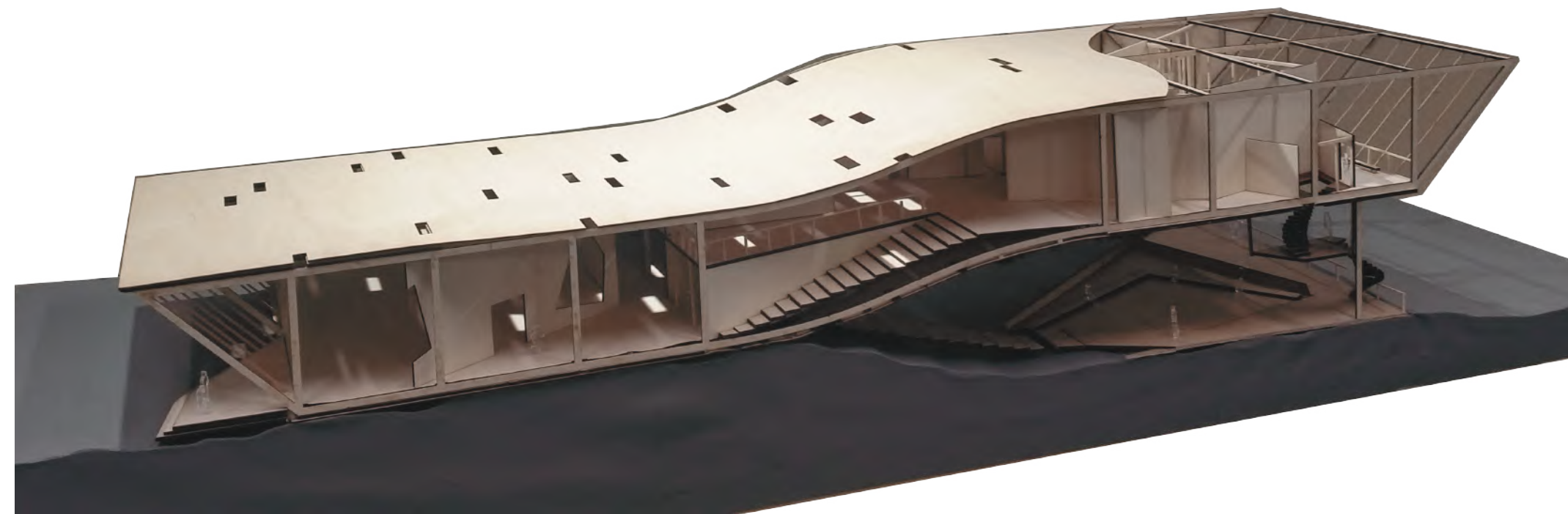
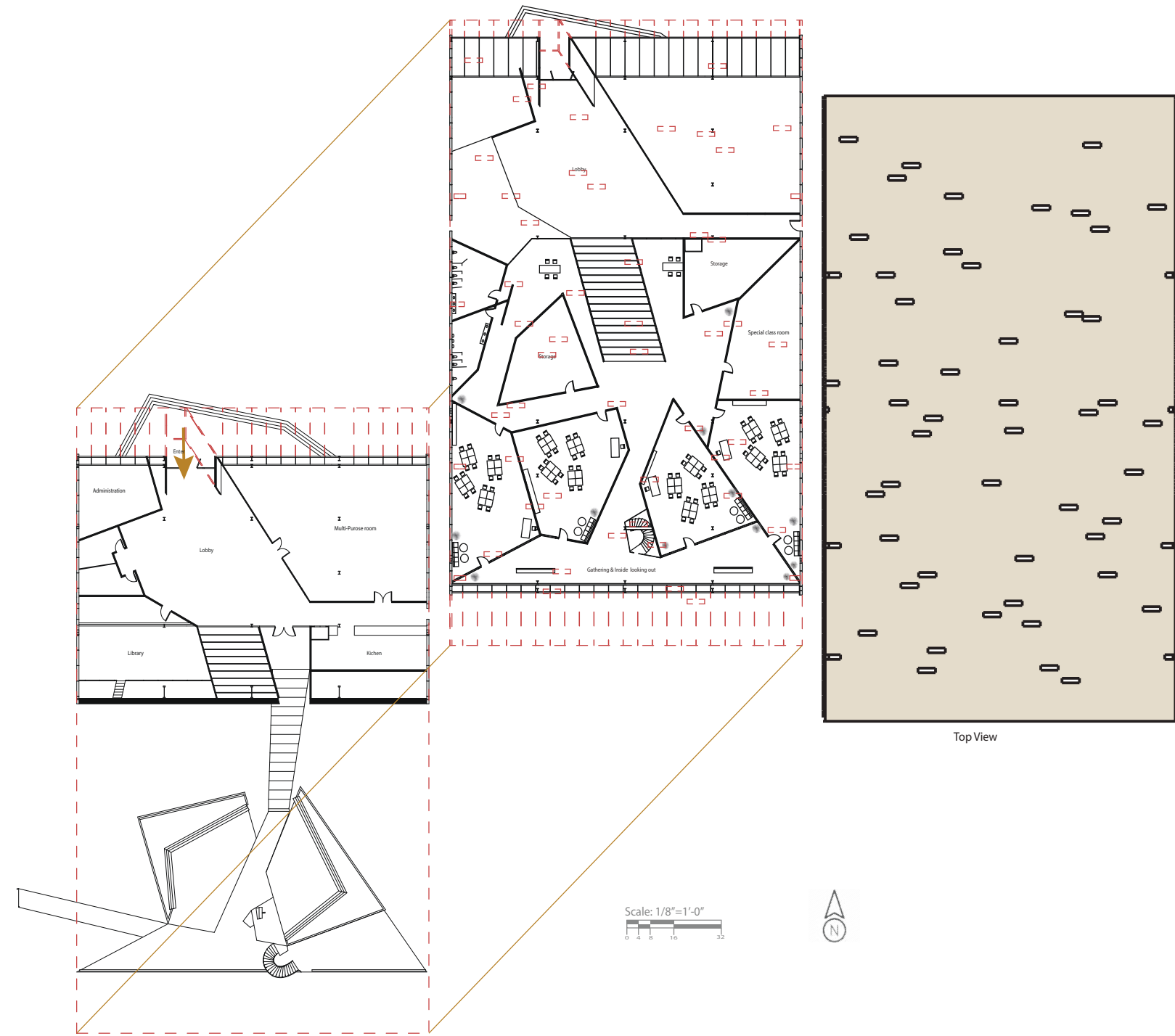
Buiding structure



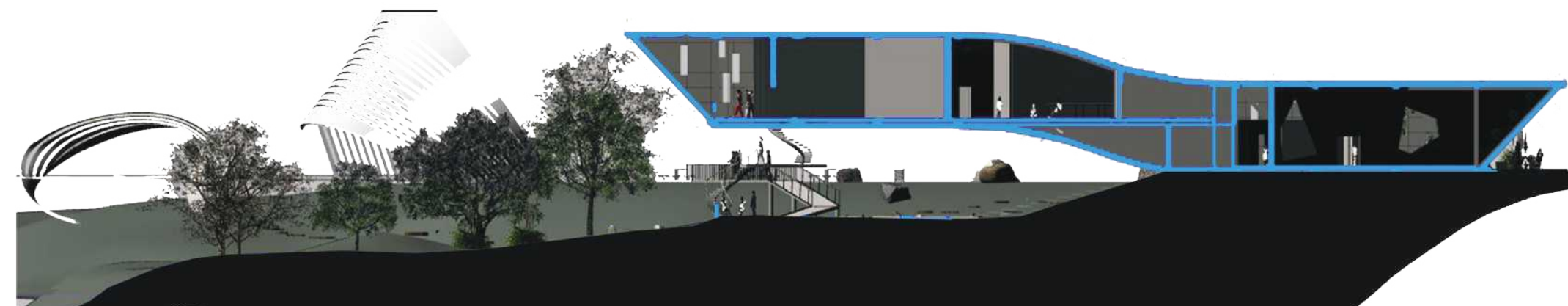
Daylighting

Outside Looking Out

Building Analysis



Physical model

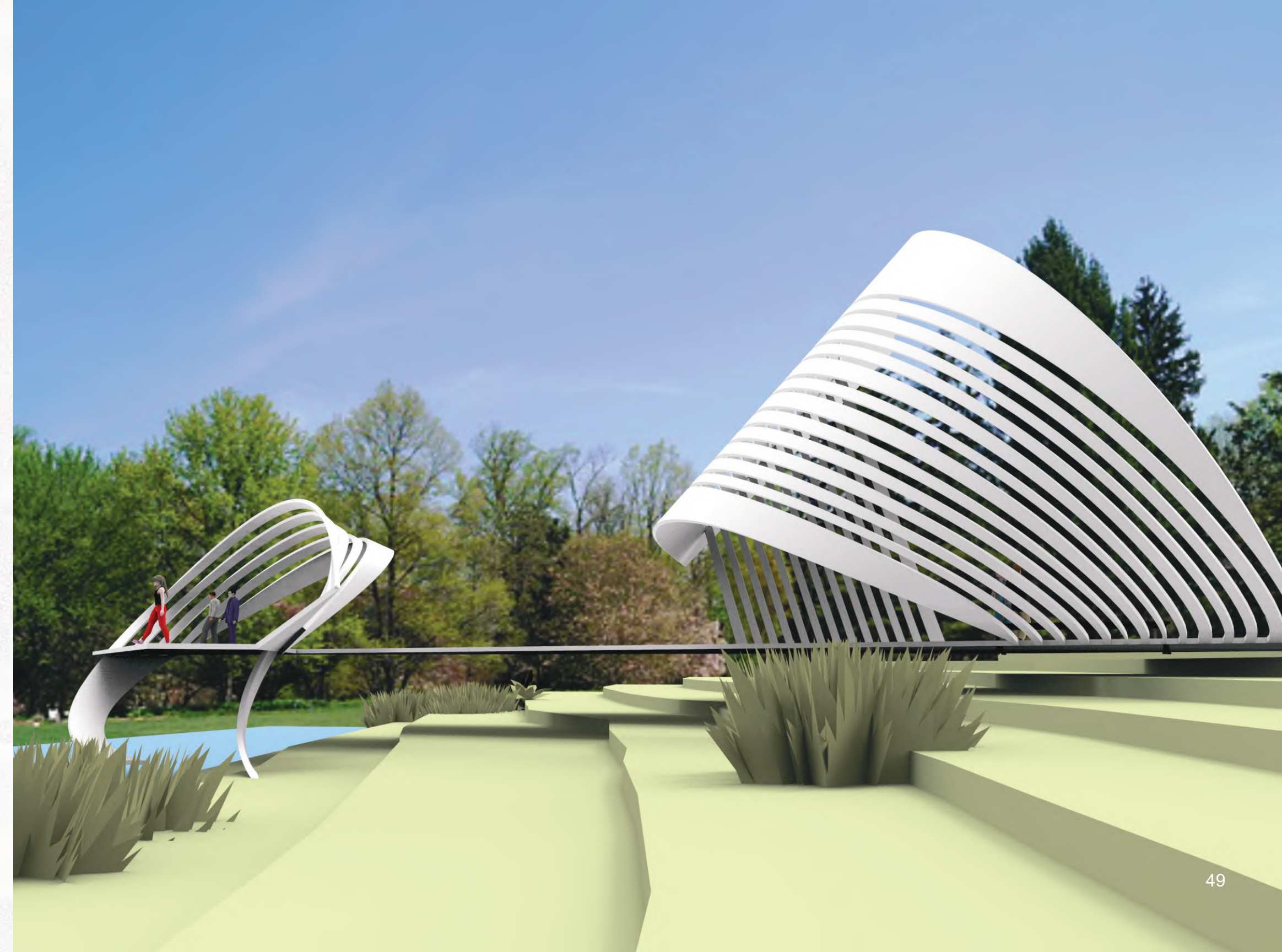


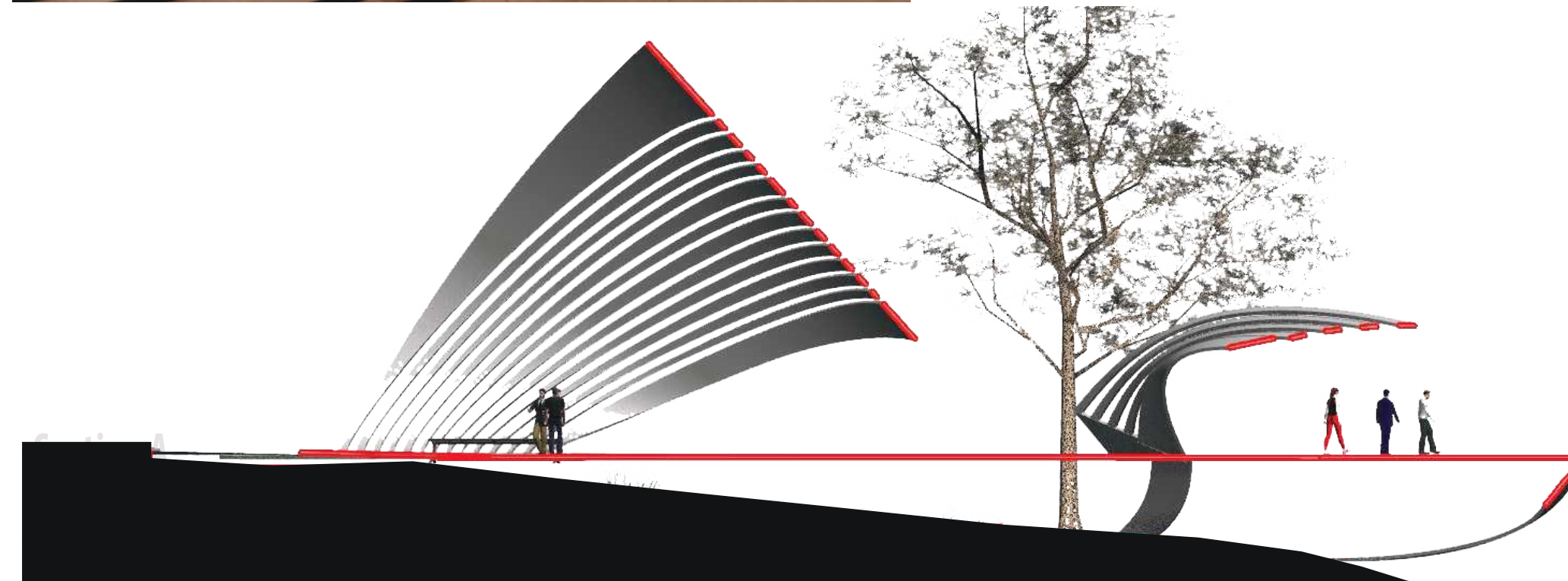
Physical Model

Grand River

Trail Shelter and Lookout

This trail shelter and lookout is part of Urban School design. Design a shelter connect to outside and inside of school, engaging students participating environment. Collaborate with fellow teachers to create a data-driven, learner-centered, friendly and safe environment demonstrating shared responsibility for achievement.

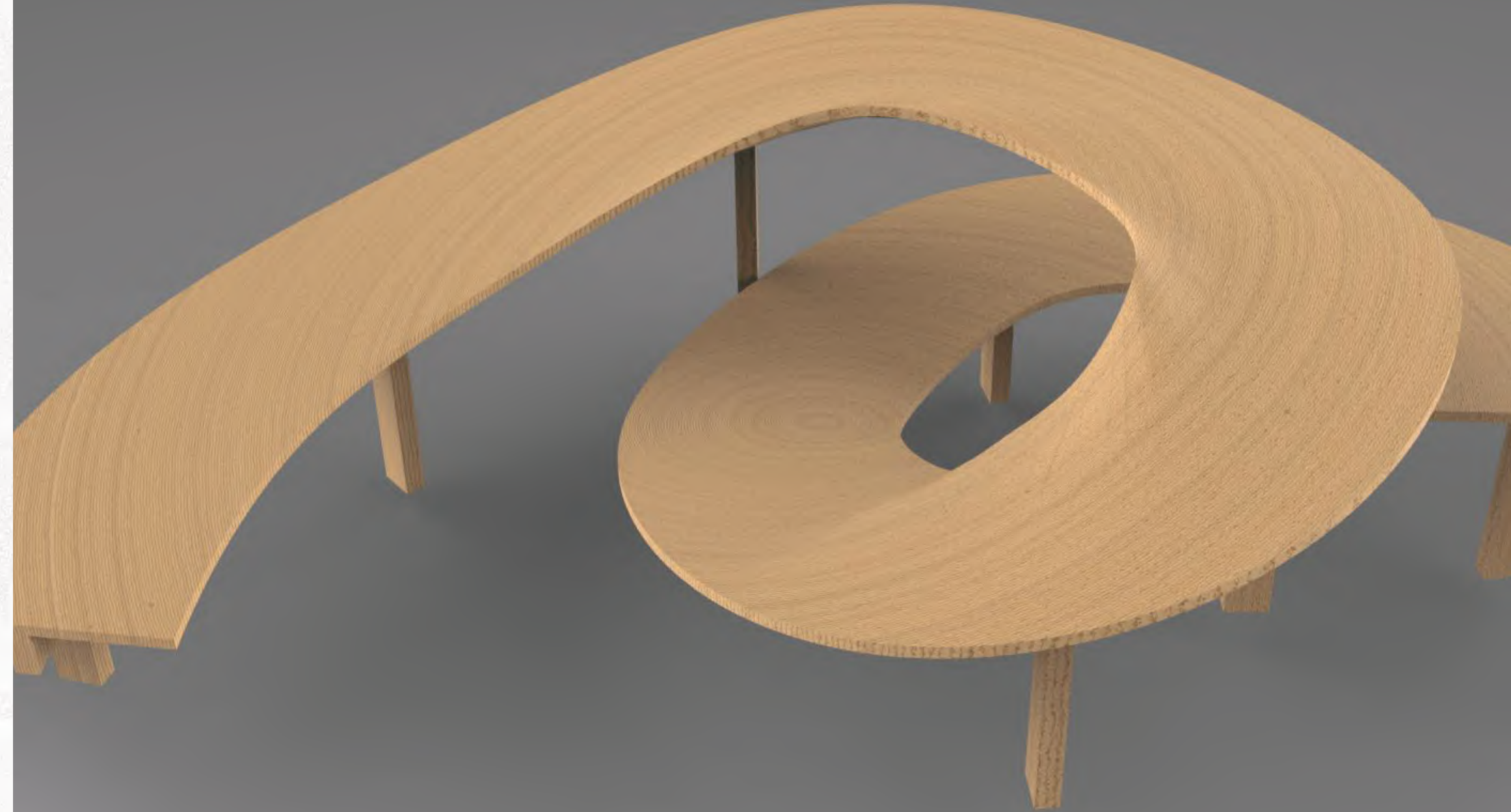


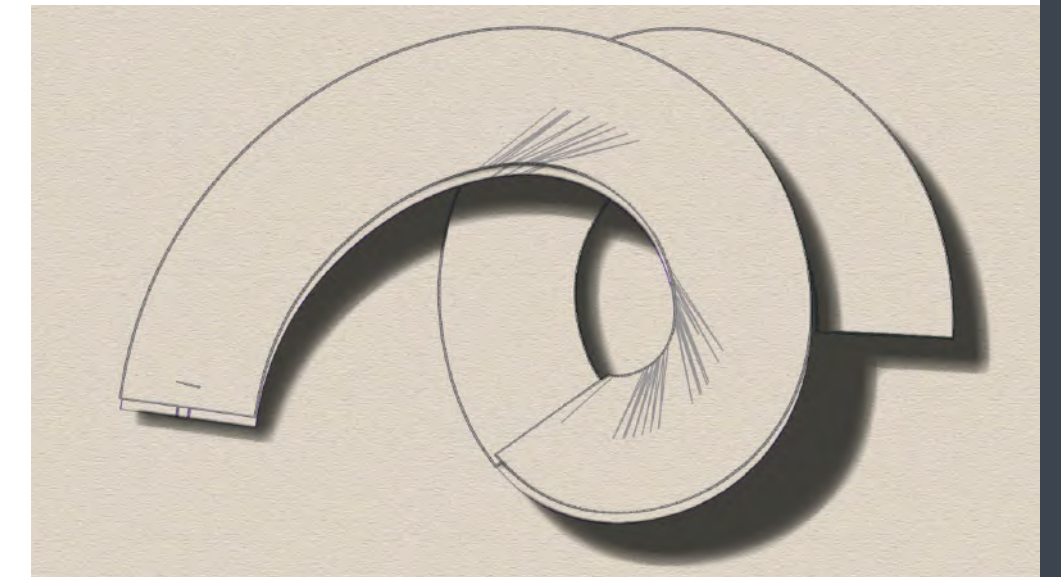
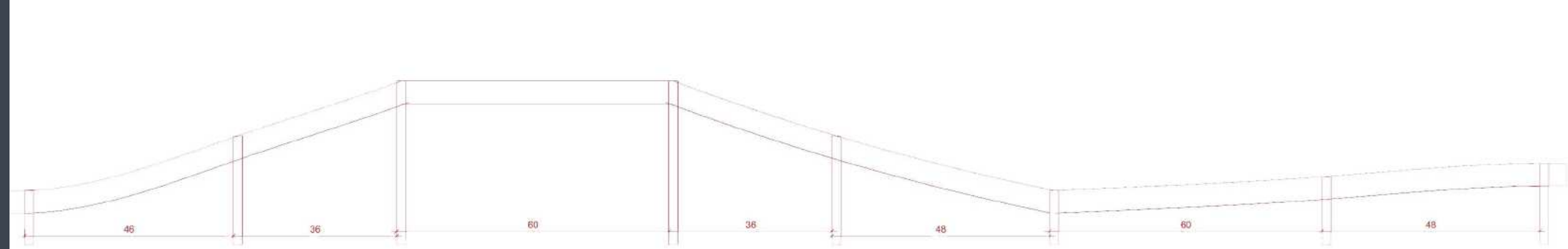
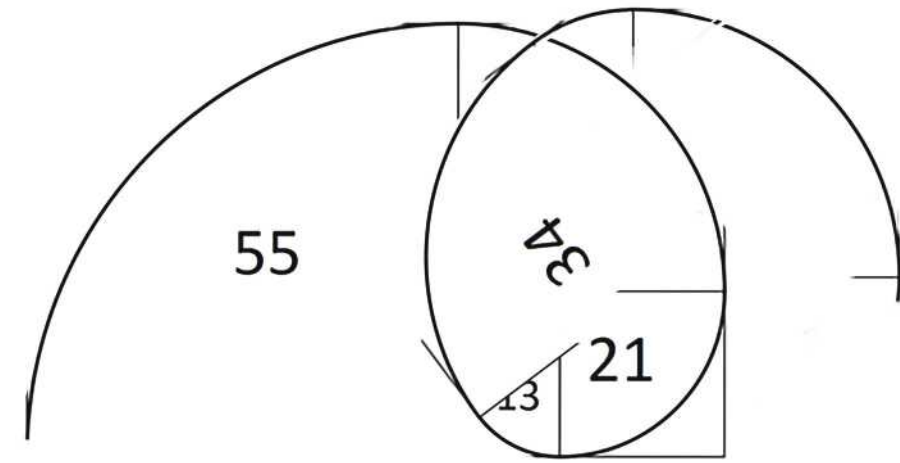
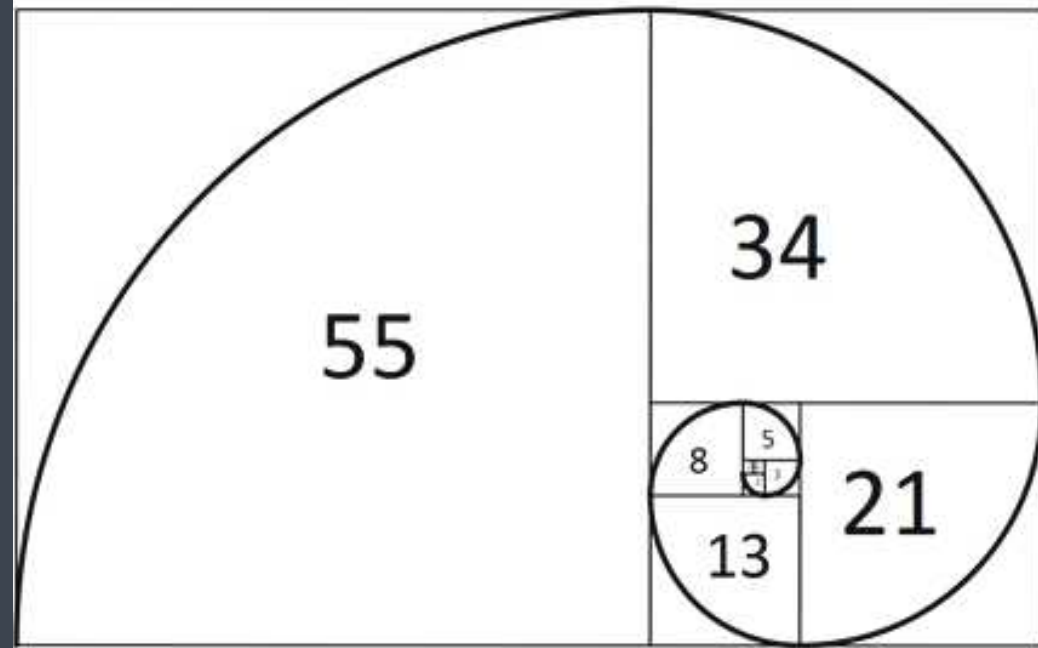


Outdoor performance stage

Musical instruments: Lute, Erhu

The Viewer can easily to see the performers, the construct won't block the vision from Viewers. When performers use the construct, they can make more interaction from each other. The instruments of Lute and Erhu can be play with both posture stand and seat. Even can play them and run around of the stage. So, the construct can allow performers seat and stand, also can walk around, the performers can use different post to show up to their audience. The safety and materials also are big part of the design, the high of the stage won't beyond 6 ft. the materials will use wood, consider to easier storage, moveable and reinstall able. The style of the construct connects the style of the Outdoor performance stage, such use wave shape and line in the construct.





Artistic Statement - Pure Michigan

I was lucky to have grown up in the Guilin countryside, a region famed in China for its scenic beauty. Therefore, I am spontaneously drawn to colors, lines, textures and emotions within my surroundings while I incorporate in my artworks my love for nature and society, in order to create a relationship with agriculture, wildlife, food chains, and politics. When I moved to Michigan in 2010, I found that I was intrigued by similar elements in Michigan landscapes. As an artist, I feel the responsibility to address subject matters that our society tends to neglect or deny, including the adverse effects of environmental hazards. The impact of human activity upon agriculture and wildlife, the food chain, nature, and plants, are matters crucial to my research and creativity.

My work consists of exploring the intermediary space between death and life, decay and growth, and wrong and right, in an attempt to understand as much as to criticize. I chose to paint visual poems in order to express human and animal behavior. The decision to use visual poems responds to a natural process stemming from people's innate need to explain themselves and their relationship to the world they inhabit--a desire that is particularly powerful during adolescence. Such visual poems assume and imply that spectators' experience and knowledge will lead to the creation of numerous interpretations. Using paintings as visual poems triggers viewers' imagination, and enables them to get a glimpse at who I am and what I think, as well as at what my life has been like, what I want to achieve, along with what I am capable of accomplishing.

I hope that my artwork will give rise to a greater appreciation of the beauty and the fragility of the natural world. Modern society is becoming increasingly disconnected from nature. I believe, however, that in order to ensure a successful future for humanity, it is essential that we reclaim a greater awareness and consideration for our planet's life and it is imperative that we, as artists, contribute to this necessary change.



Medium : Xuan paper, Ink,
Chinese Painting
Time : 2016
Size : 3ft* 6ft





Medium : Xuan paper, Ink,
Chinese Painting

Time : 2017

Size : 3ft* 6ft



Medium : Xuan paper, Ink,
Chinese Painting

Time : 2017

Size : 3ft* 6ft



Medium : Xuan paper, Ink,
Chinese Painting
Time : 2017
Size : 3ft* 5ft



Medium : Xuan paper, Ink,
Chinese Painting
Time : 2015
Size : 3ft* 5ft

Life Sketch Italy

Life sketch in Italy, this is nice way to learn the buildings, the cultures and life styles. I did more than 30 sketches during the study abroad in Italy 2018.



⑤ 其明心在拉惹大和 Ulu Teras 街角。在九月十三日
 下午二时余手持相机入内。八月十三日



其明心在拉惹大和 Ulu Teras
 城大门。八月五日三〇一八五二

